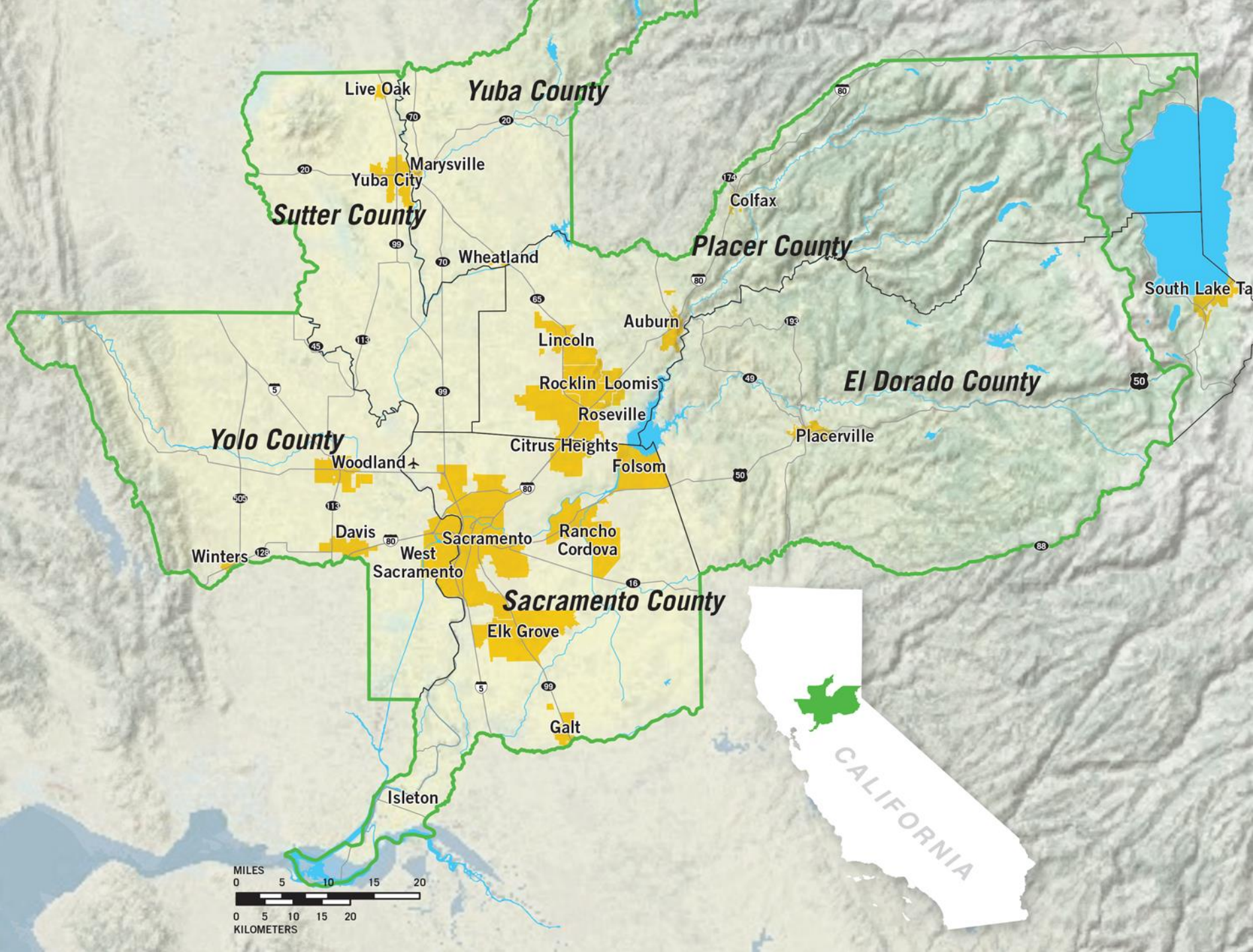


Accelerating infill to achieve transportation and climate goals

SACOG UPDATE TO SMUD BOARD OF DIRECTORS





2.4M PEOPLE

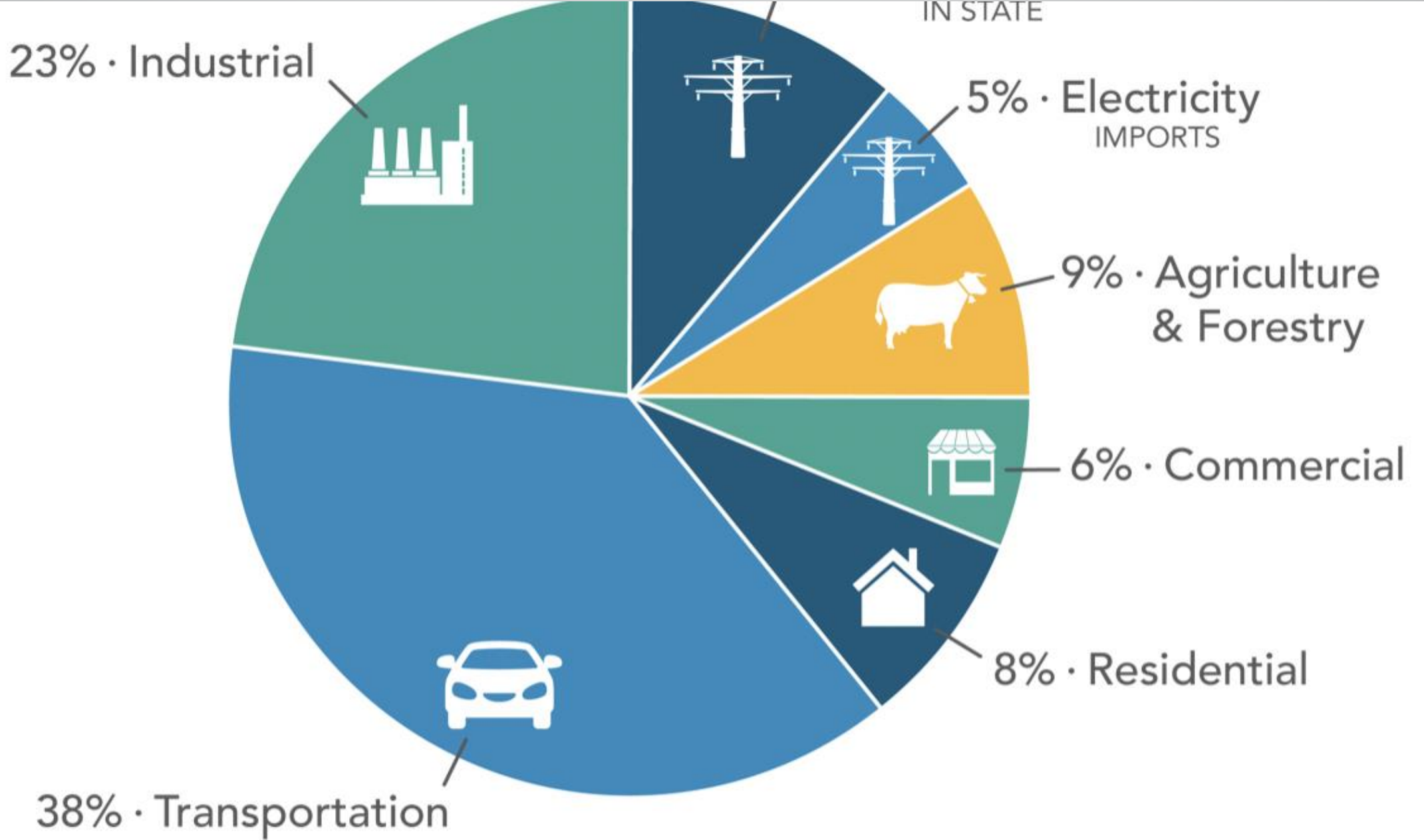
6 COUNTIES

22 CITIES

RURAL

SUBURBAN

URBAN



369.2 MMT CO₂e

Source: CARB 2020 Scoping Plan

Sacramento Region Zero Carbon Transportation Initiatives

ZEV Deployment Strategy



Sacramento



Regional
Transit



SACRAMENTO METROPOLITAN



AIR QUALITY
MANAGEMENT DISTRICT

The 4 Agency Opportunity

4 Agencies and 1 Solution-Focused Strategy

- Reduce vehicle miles traveled (VMT)
- Replace existing sources with zero-emission fuels (electricity and hydrogen)
- Invest in under resourced neighborhoods

| VARIABLE | CURRENT |
|--------------------------------|-------------------|
| Passenger VMT (w/in region) | 42,579,600 |
| Passenger VMT (through-travel) | 9,216,100 |
| Commercial VMT (Trucks) | 6,644,100 |
| Transit Bus VMT | 47,200 |
| Total VMT | 58,487,000 |

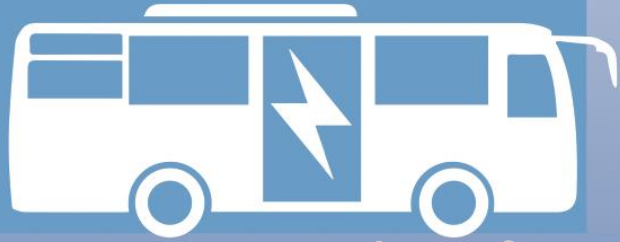
Total VMT per Weekday in Sacramento Region

Improve air quality • Reduce GHG emissions • Abate exposure to toxins •
Adapt to warming planet • Promote efficient mobility

- 600 ZEV Buses
- 5+ Charging & Refueling Facilities

1

Transit Fleet



- 5 MD-HD Charging Plazas

2

MD-HD Fleet



- 52 eMobility Hubs
- 182 LD EV Chargers

3

eMobility



- 4,000 People Trained
- 1,000 People Hired

4

Clean Energy Workforce



1dece5f3-987d-4023-
ga2f-f7ccdee131c7

Green Means Go Program: Accelerating Infill by removing infrastructure barriers

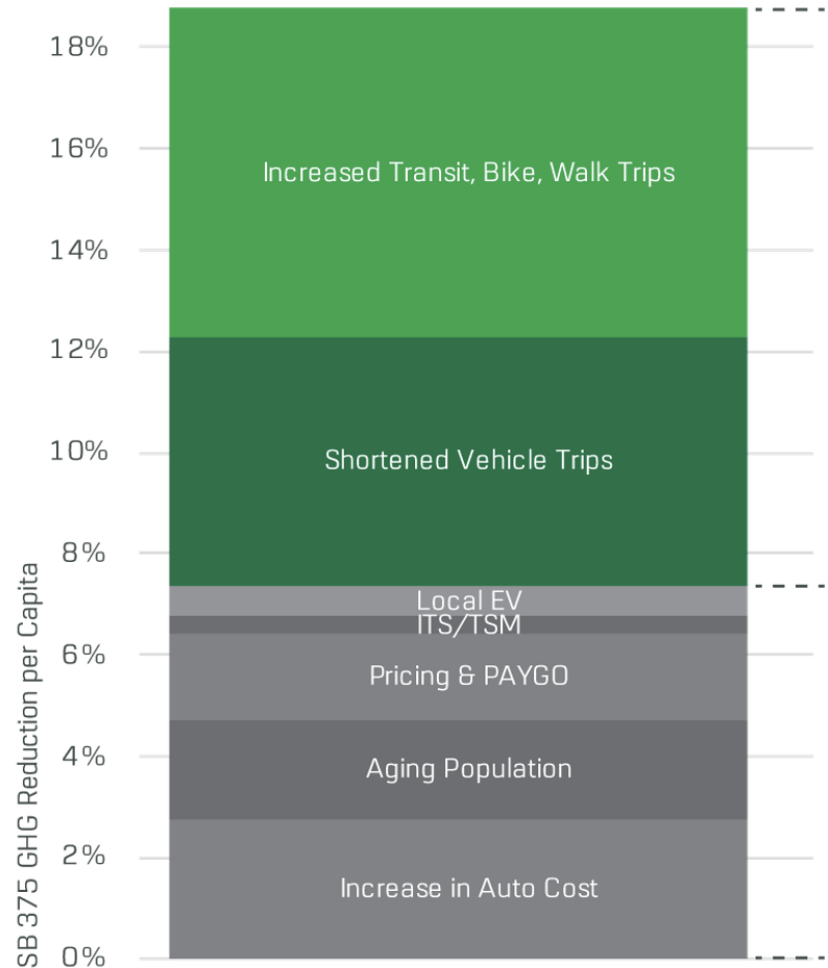


What is Green Means Go?

- Accelerate infill development
- Meet GHG reduction target
- Economic vitality and community resiliency
- Brings housing to low VMT areas with transit service



Key Factors Contributing to 19% GHG Reduction



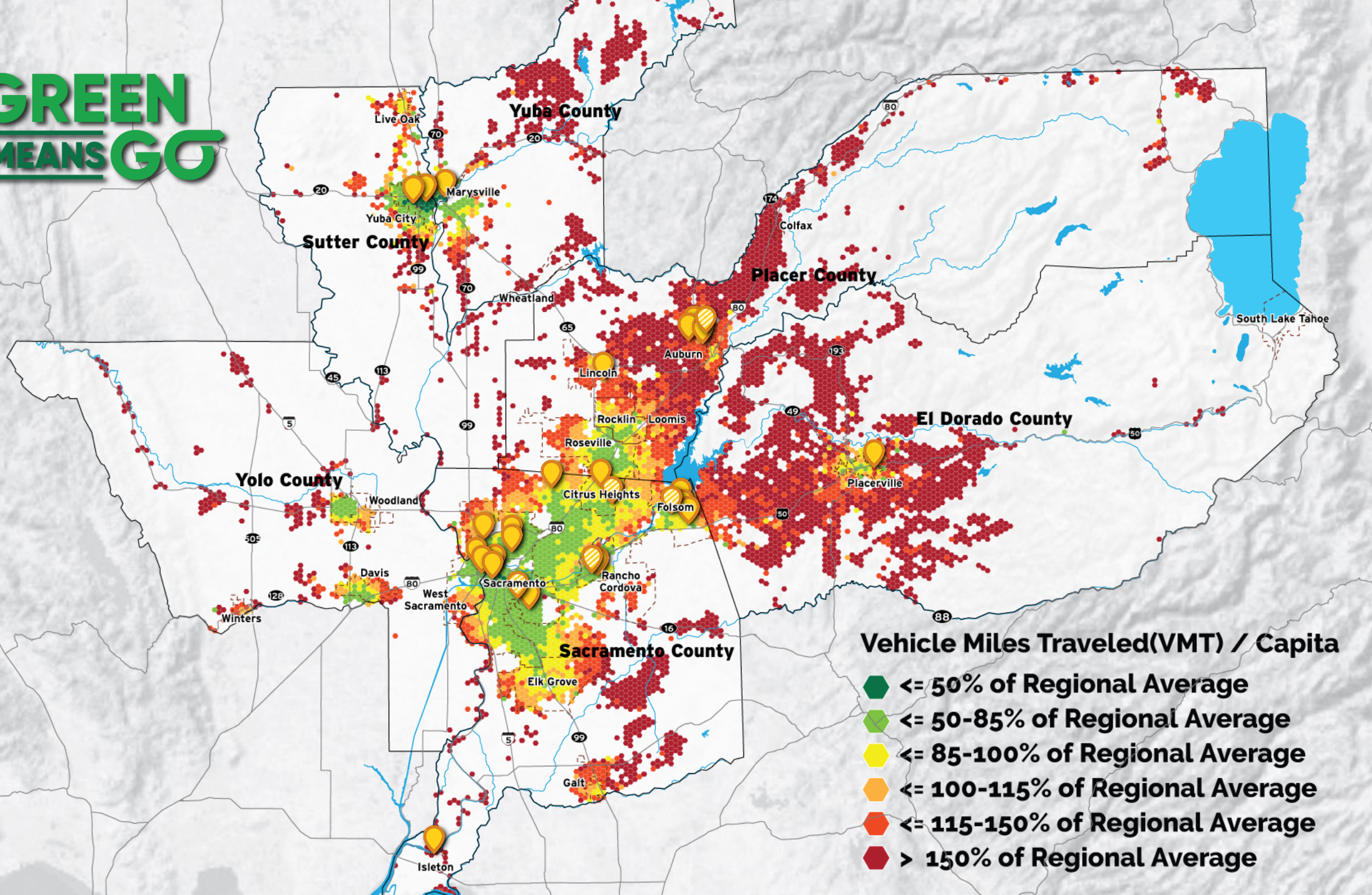
**Built
Environment**



MTP/SCS
METROPOLITAN TRANSPORTATION PLAN
SUSTAINABLE COMMUNITIES STRATEGY



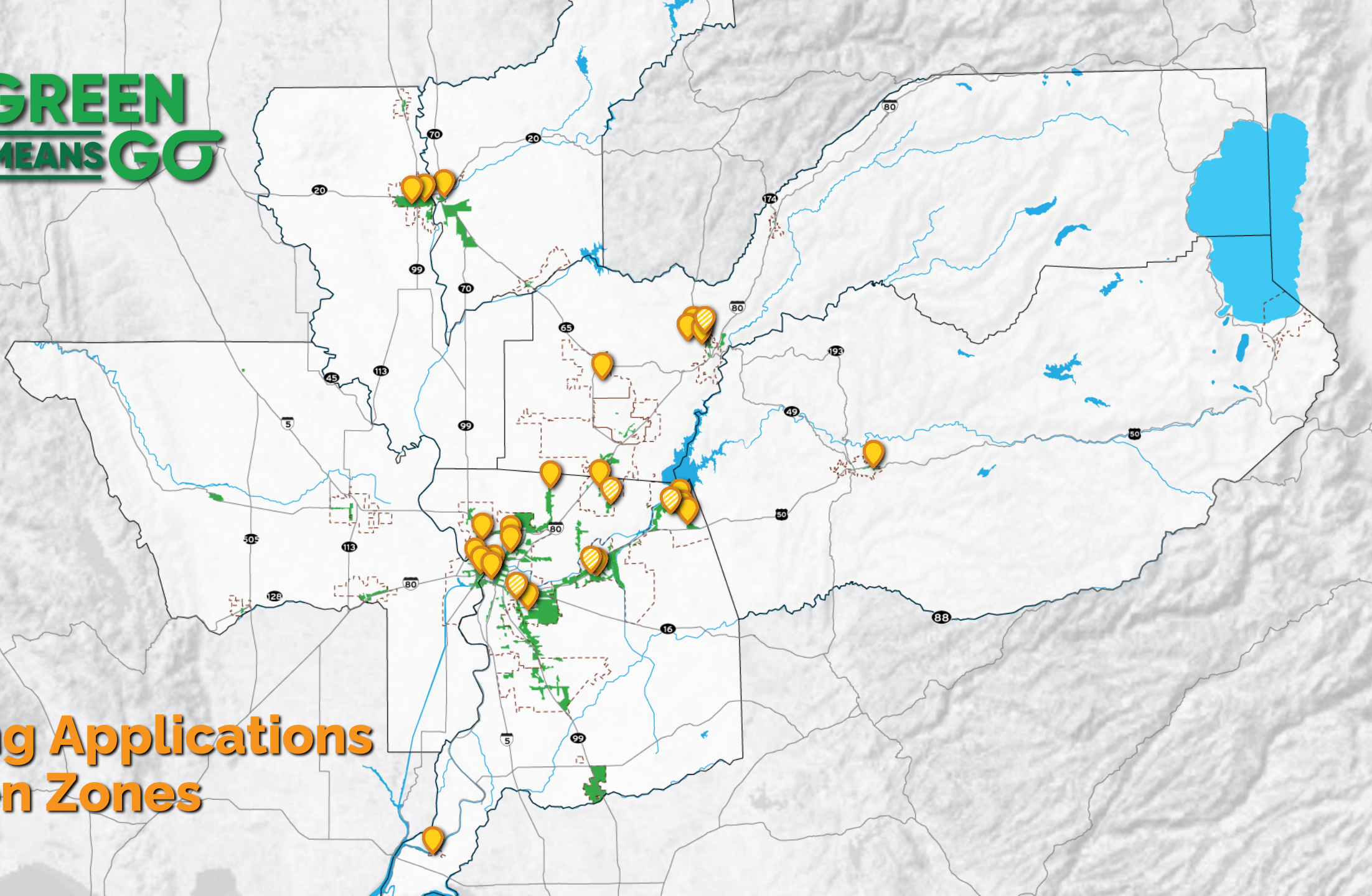
**GREEN
MEANS GO**



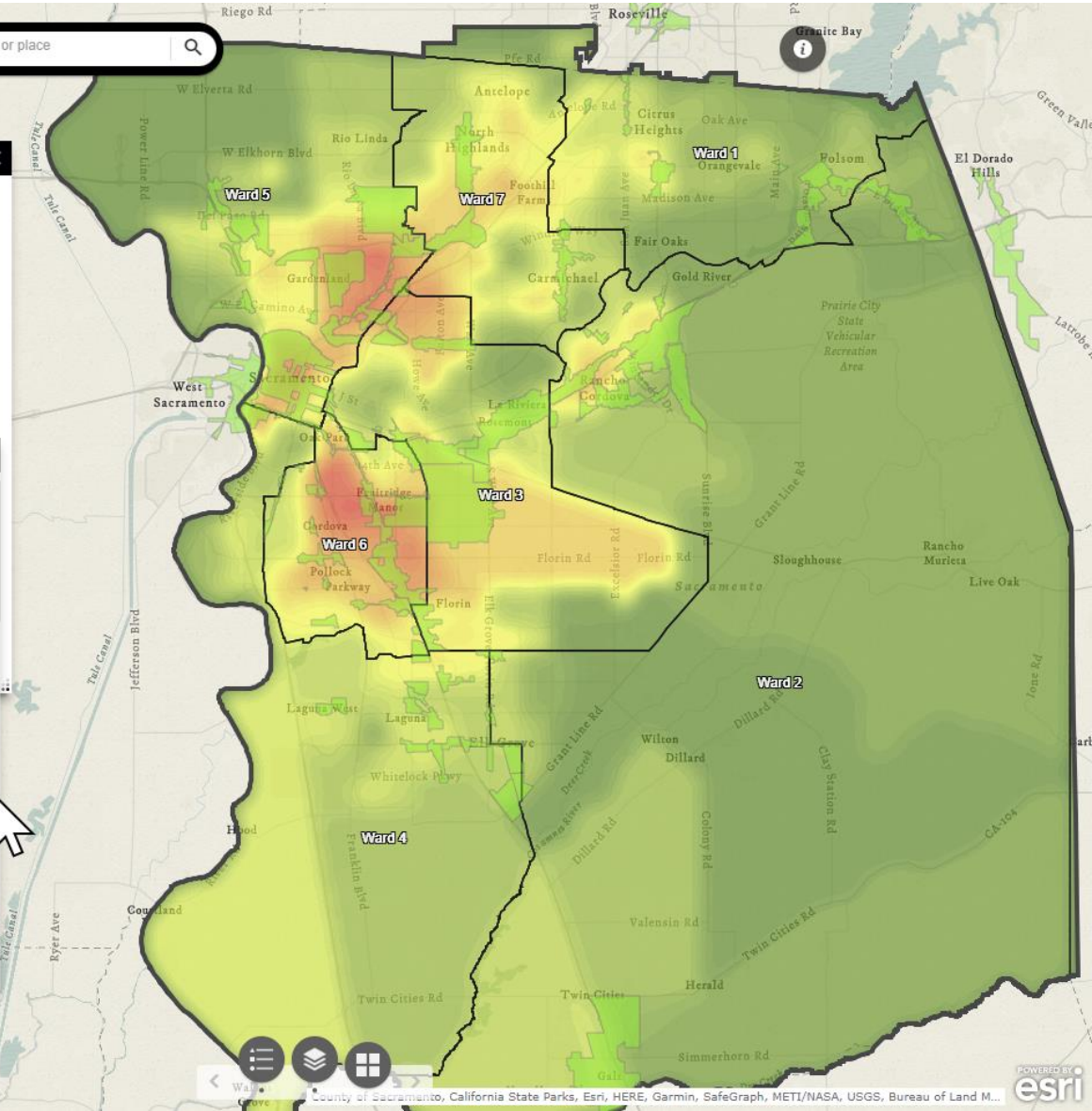


**GREEN
MEANS GO**

Funding Applications & Green Zones

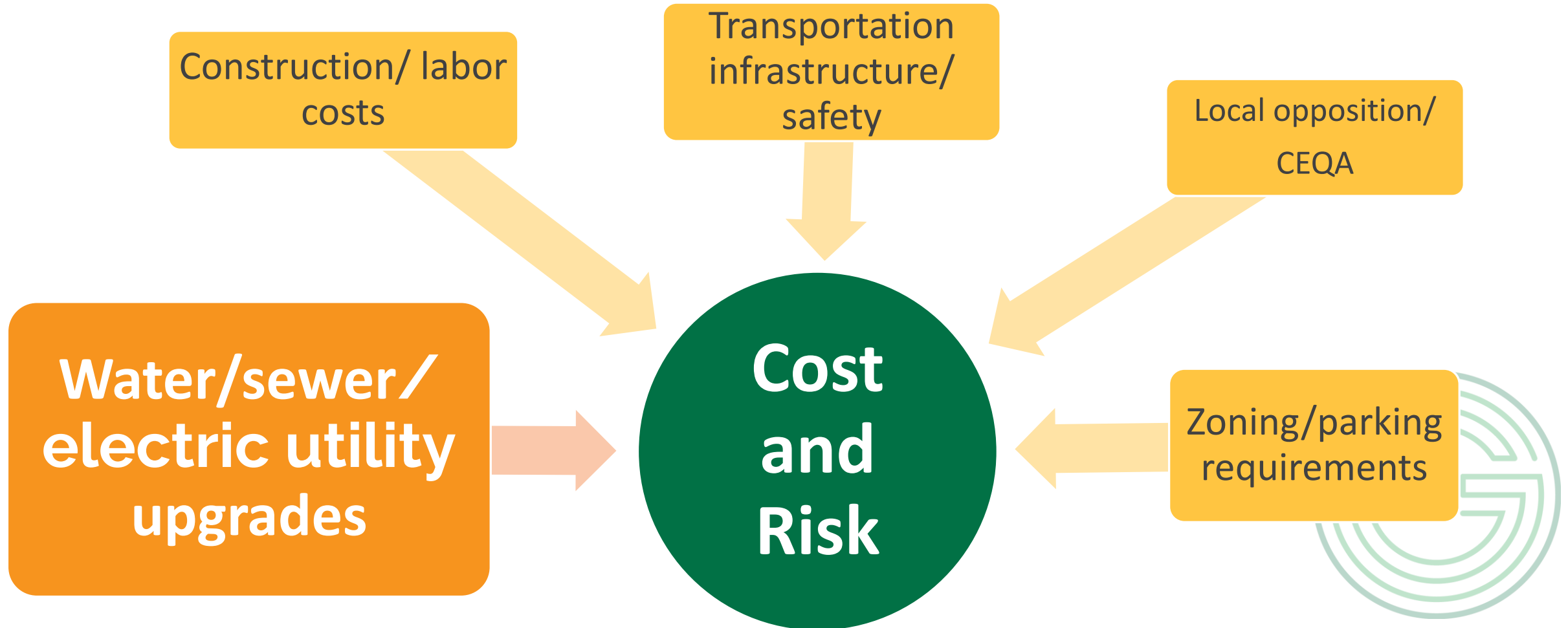


Sacramento County Green Zones for Infill



- Sac County jurisdictions have adopted 60 specific 'Green Zones' countywide
- Sac County jurisdictions account for nearly 80% of future centers/TOD/corridor growth across entire six county region
- Green Zone investments could yield 60,000+ housing units and 80,000+ jobs

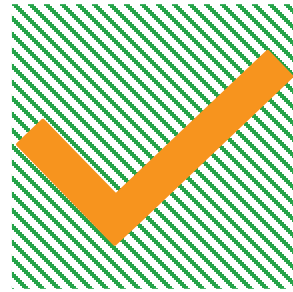
Challenges to Infill Development



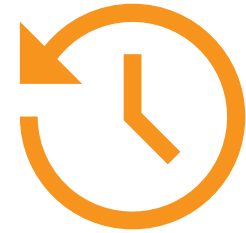
Green Means Go Funding



Infrastructure



**Planning activities to get
Green Zone ready**



**Implementation
activities**



Community Impact Plan

Ensuring no community left behind

Jobs and workforce development priorities

Community-based organization capacity building

The need for cultural (community) ambassadors

Simplified messaging and materials

Programs relevant to renters, median income, small businesses



Our audience

Residential

- Low- & median-income populations who can't afford necessities
- Renter with higher energy burdens
- Under-served populations with cultural or language barriers

Commercial

- Small businesses
- Nonprofits

Our focus



Affordability



Equitable access



Community engagement

We're doubling the current investment towards under-resourced communities!

Our approach

- **Diversifying** clean energy programs to make them accessible to more residential customers.
- **Leading** inclusive economic development with new job trainings and job placement programs for clean energy jobs.
- **Focusing** on investing in the business community through meaningful and impactful partnerships.
- **Creating** capacity building opportunities for nonprofits to support our 2030 zero carbon plan engagement.
- **Showing up** in culturally relevant ways with community education and outreach through our community ambassador teams.



Community Impact Plan Key Initiatives

Core areas:

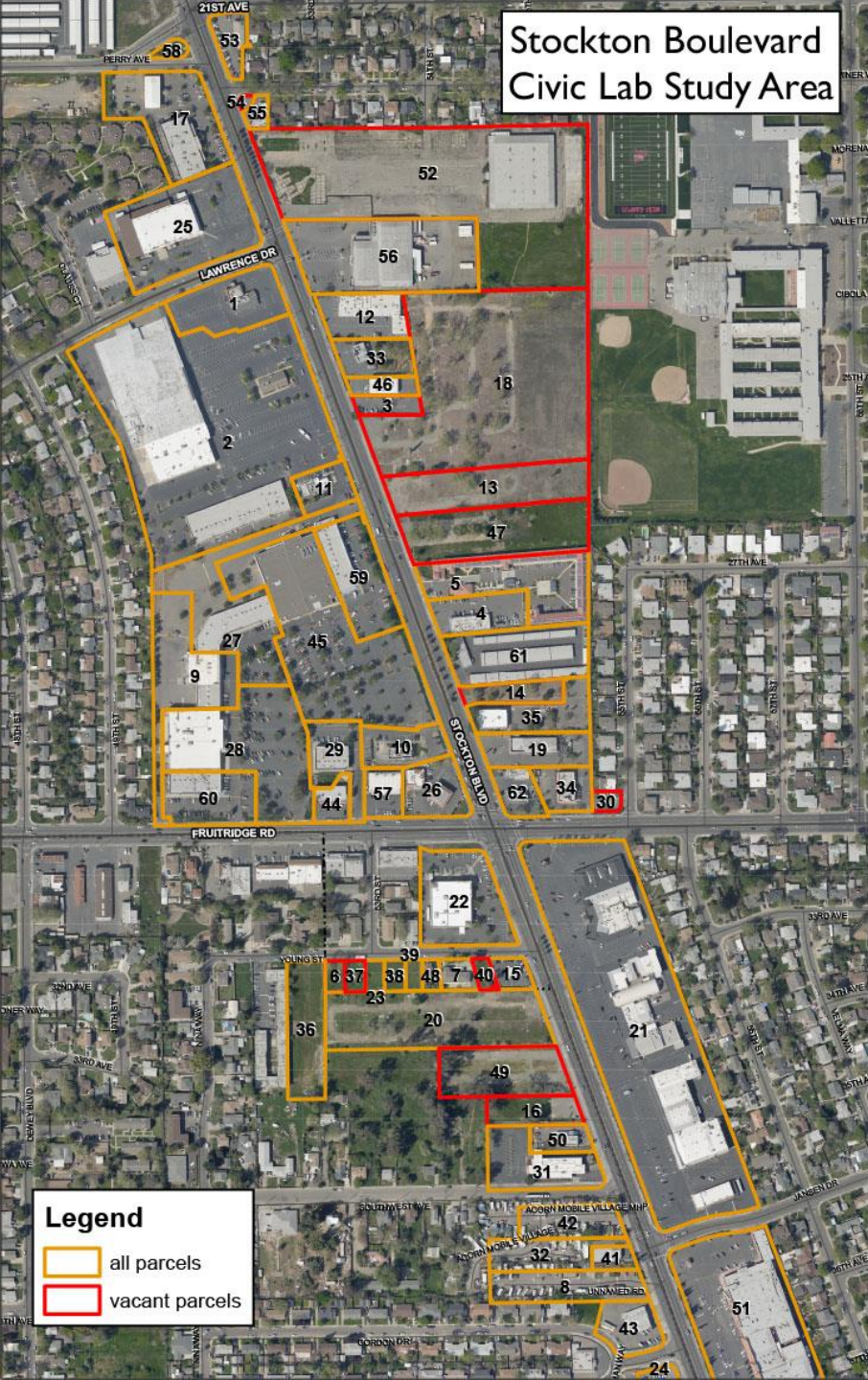
Affordability

Equitable Access

Community engagement

Double current investment towards under-resourced communities

- **Diversify portfolio offerings** to include options beyond direct install and that are accessible to a broader customer base
 - Increased incentives for affordable housing providers, median income residents, small business and non-profits
 - Financing options
 - Increased Shine Award funding
- **Inclusive economic development and workforce training**
 - New job training and apprenticeship programs specific to clean energy jobs
 - Investment in business community through Property and Business Improvement Districts and regional Chamber partners
- **Capacity building for non-profits** to help further our reach (Zero Carbon Plan engagement) and enhance ability to support communities
- **Community education/outreach plan** that micro-targets under resourced areas
 - Create a Cultural Ambassador team
 - Expand depth/breadth of translations (languages and materials)



Stockton Boulevard
Civic Lab Study Area

Stockton Boulevard Civic Lab Commercial Corridor

- Old commercial corridor needing comprehensive investment to prime for infill development
- Governance challenges: split between Sac City and Sac County; multiple special districts
- Award in Early Activation category of Green Means Go
- Investment is bringing in more housing in possible future higher frequency bus corridor



Former Motel Opportunity Site on Stockton Blvd.



Area Adjacent to Mather Mills Light Rail Station

- Awards in Green Means Go Early Activation and Capital category
- Also won statewide HIT grant



Rancho Cordova

MTP/SCS



Infill Area

Needs

\$7M



**Drainage
Upgrades**

To Unlock

Over 20 Acres



Vacant Land

Supported Locally by:



**Folsom Boulevard
Specific Plan**



An innovative pilot project to cut greenhouse gas emissions in the greater Sacramento region

SUNRISE TODAY

Sunrise Tomorrow



SUNRISE TOMORROW

Sunrise Tomorrow



**Artist's illustration of potential future development*

Citrus Heights

MTP/SCS



Infill Area

\$36+M

Needs



To Unlock

**Road, Sidewalk, Sewer, Water,
Drainage, Electric and Natural Gas**

Over 800



**New
Housing Units &**

Over 1.3M ft²



**Commercial and
Community Space**

Supported Locally by:



**Sunrise Specific
Plan & significant
community
outreach**



An innovative pilot project to cut greenhouse gas emissions in the greater Sacramento region





Green Means Go: A Regional Partnership

Local

- **Update zoning codes and local ordinances**
- **Streamline permitting process**
- **Lower or waive impact fees**

SACOG

- **Fund corridor planning**
- **Fund local transportation plans and projects in “Green Zones”**
- **Support for Civic Lab smart mobility and commercial corridor project implementation**
- **2020 Commercial Corridors Task Force**
- **“Mind the Gap” Housing Toolkit**

SMUD

- **Can SMUD engage with SACOG and ready local governments to advance infrastructure in Green Zones?**
- **Can SMUD align its grant strategy to prioritize infrastructure upgrades in Green Zones?**
- **Can SMUD prioritize its Community Impact Plan in areas with Green Zones?**



Other SACOG Initiatives

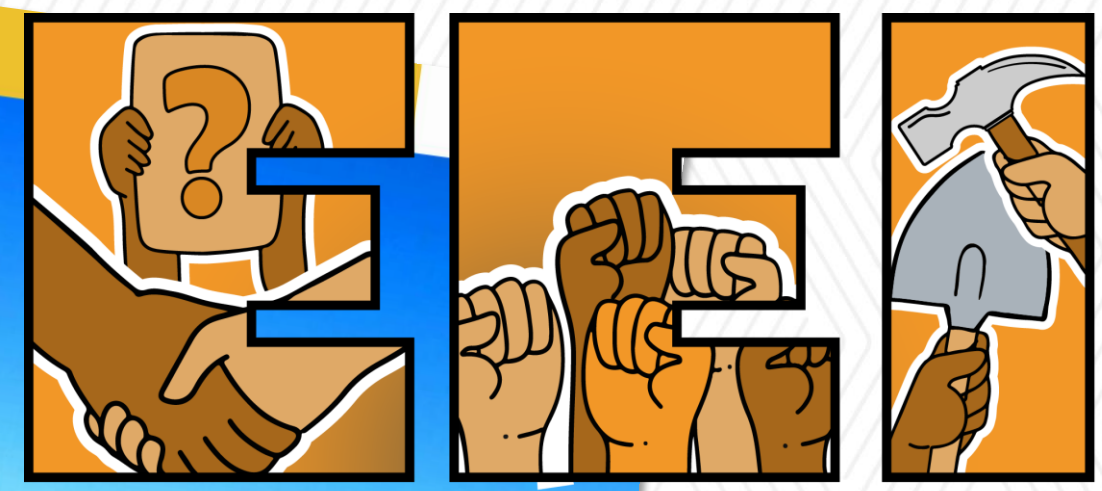
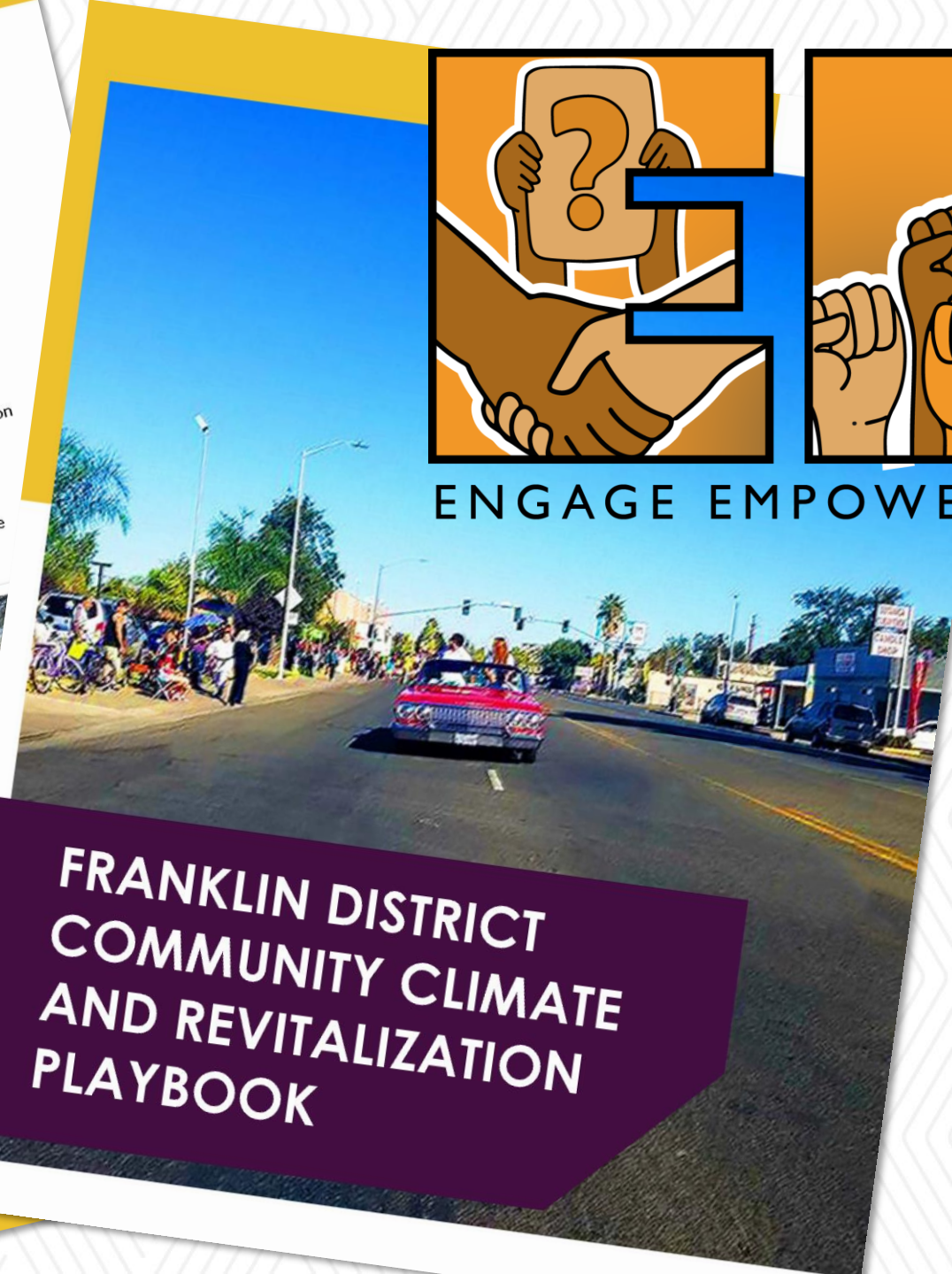




Ready, Set,
TRAILS!
 VISION FOR A CONNECTED
 SACRAMENTO REGION

However, the Franklin area also still faces some tough challenges:

- Many people don't earn much income, and some can't find employment.
- Many adults have limited education, and there aren't enough job, education, and training opportunities for adults and teens.
- A majority of the students in the public schools qualify for free or reduced cost lunches.
- There is an increase in homelessness.
- There is a need for more and more affordable housing.
- Per CalEnviroScreen 3.0, the Franklin District still ranks in the 90th percentile of Disadvantaged Communities for environmental concerns, including poor air quality and high heat levels that pose risks for people's health.
- The Franklin District is in the Promise Zone and Opportunity Zone, noted for low-income disparities.
- Without more transportation choices, most families have to drive, which makes their transportation costs high and contributes to air pollution.
- The District also lacks parks, trees, green space, community gardens, and shade that can help reduce air pollution and heat.
- Over the years, there has not been much public investment in our neighborhood, and there are ongoing problems with blighted properties, dumping, vandalism, and homelessness



ENGAGE EMPOWER IMPLEMENT

**FRANKLIN DISTRICT
COMMUNITY CLIMATE
AND REVITALIZATION
PLAYBOOK**



METROPOLITAN TRANSPORTATION COMMISSION



SACOG
Sacramento to Roseville
Third Main Track - Phase 1

SACOG
I-5 Managed Lanes -
Sutterville Road to Yolo County Line

SACOG
Yolo I-80 and US 50 Managed Lanes

Sacramento

SACOG
Valley Rail Program includes
expansion of both ACE and the
San Joaquins Services

MTC
I-80 Westbound Cordelia Commercial
Vehicle Enforcement Facility
(Truck Scales)



Stockton

MTC
Port of Oakland Community Impact
Reduction: Roundhouse Truck EV Charging
Infrastructure and Truck Parking

SJCOG
Passenger Rail Improvements

SJCOG
Interstate 205 Managed Lanes Project

SJCOG
State Route 99/120 Interchange
Project (Phase 1A & 1B)

San Francisco

MTC
Valley Link Buildout

SJCOG
Central Valley Gateway Project

MTC
Capitol Corridor: South Bay Connect

MEGA REGION NORTHERN CALIFORNIA WORKING GROUP

Youth Leadership Academy



A Call to Action

- **Invest in Green Zones/Sustainable Communities alignment**
- **Invest in the other Green Zones to ensure the ability for our entire community to have a livable and sustainable future**
- **Engage at the November 9th Multi-Agency board meeting**



*Thank
You*



 **GREEN MEANS GO**