

APPENDIX B1

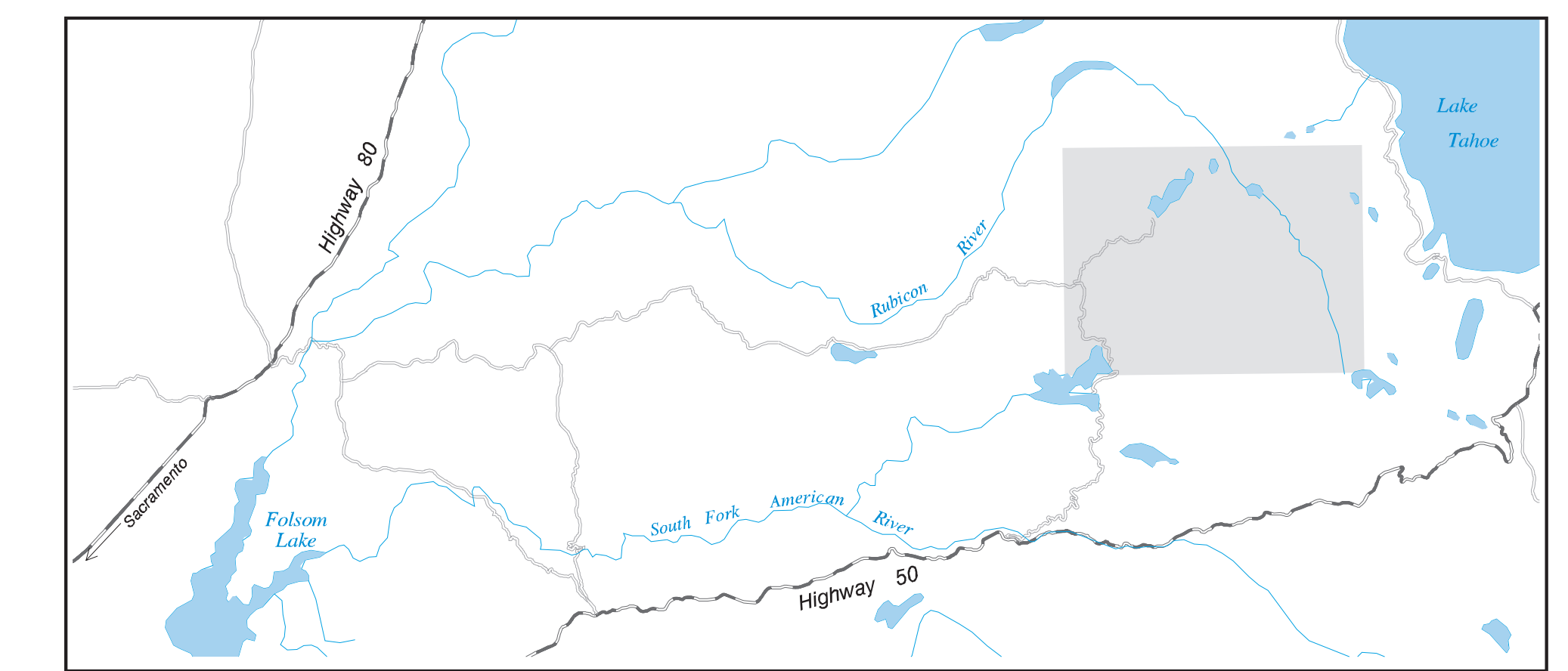
UARP AND CHILI BAR PROJECT AREA MAPS

- Map (NE) of the SMUD Upper American River Project
- Map (SE) of the SMUD Upper American River Project
- Map (West) of the SMUD Upper American River Project
- Map (SW) of the SMUD Upper American River Project

Upper American River Project

FERC Project No. 2101

Northeast Area



GEOMORPHOLOGY

Level II/III Site Maps with
Level I Stream Type Delineation

Level I Stream Types

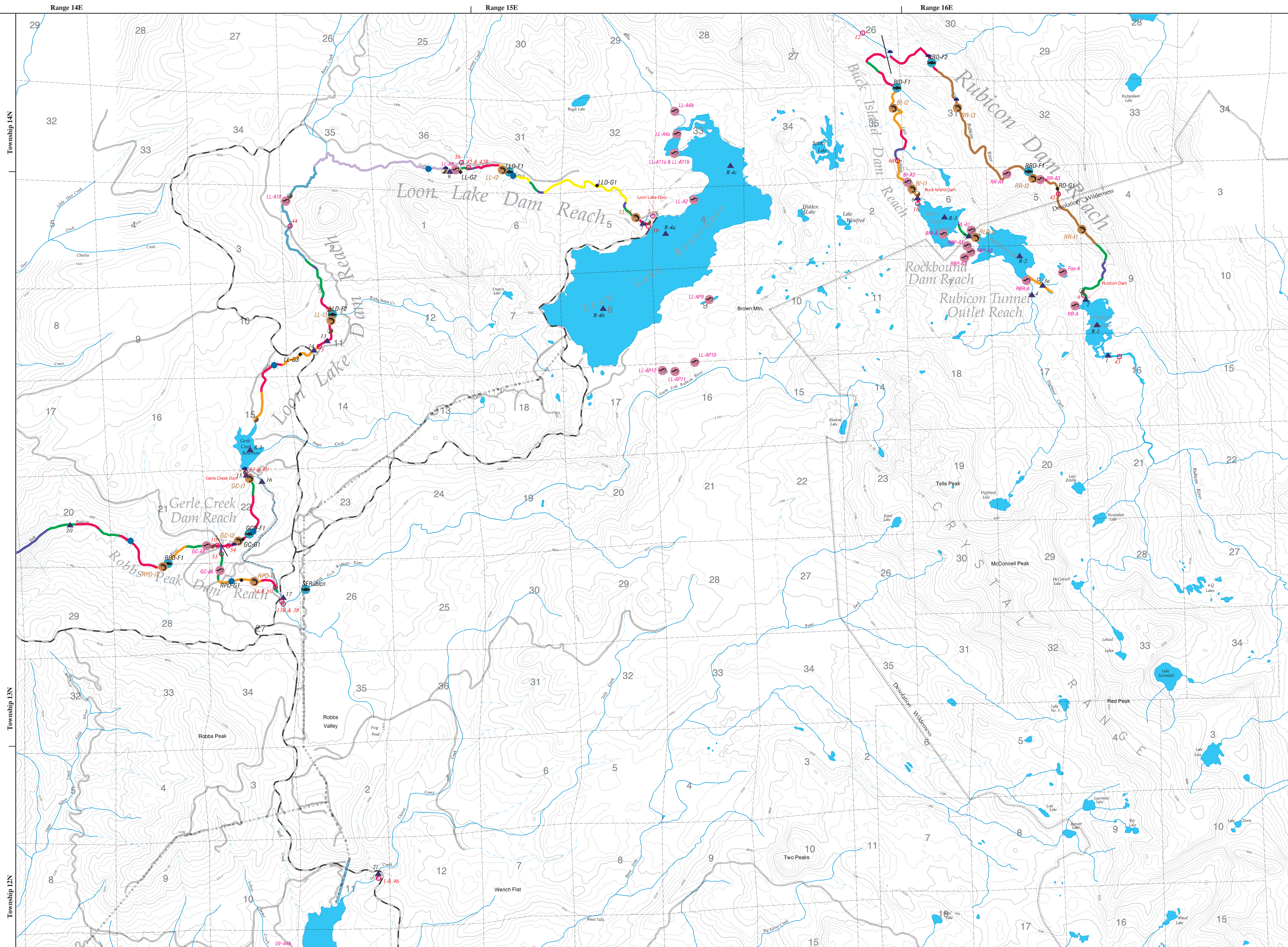
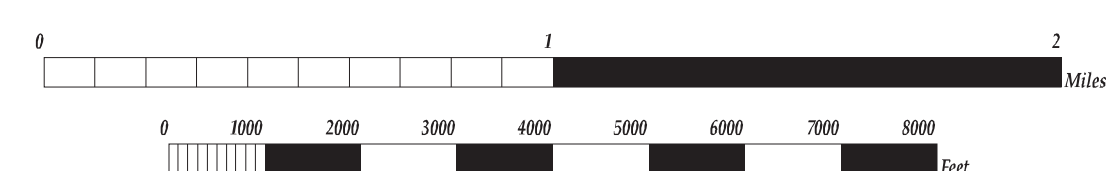
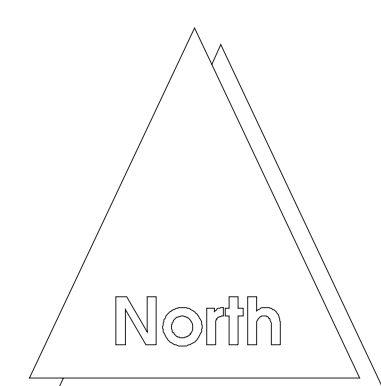
- A
- Aa+
- B
- C
- C/E/D
- C/E
- C/F
- C/F/G
- E/F/C
- F
- (denotes division between reaches)

Level II/III Sites

- ◆ Rosgen Level II Site Locations

AQUATIC SURVEYS

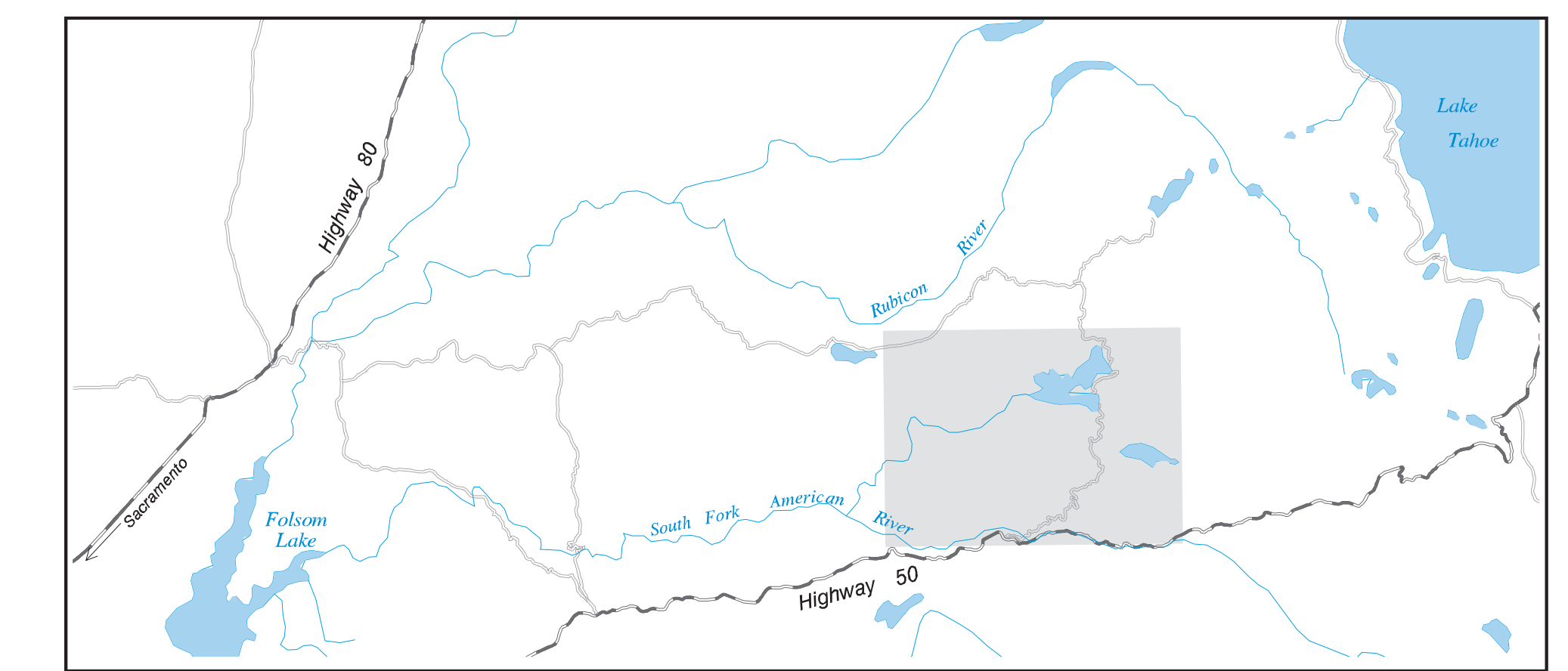
- Amphibians
- Fish
- Invertebrates
- PHABSIM Sites
- ▲ Water Quality Stations
- Water Temperature Sensor Sites
- Hydrology Nodes
- Hydrology Nodes/Gaging Stations
- Flow Fluctuation Fish Sample



Upper American River Project

FERC Project No. 2101

Southeast Area



GEOMORPHOLOGY

Level II/III Site Maps with
Level I Stream Type Delineation

Level I Stream Types

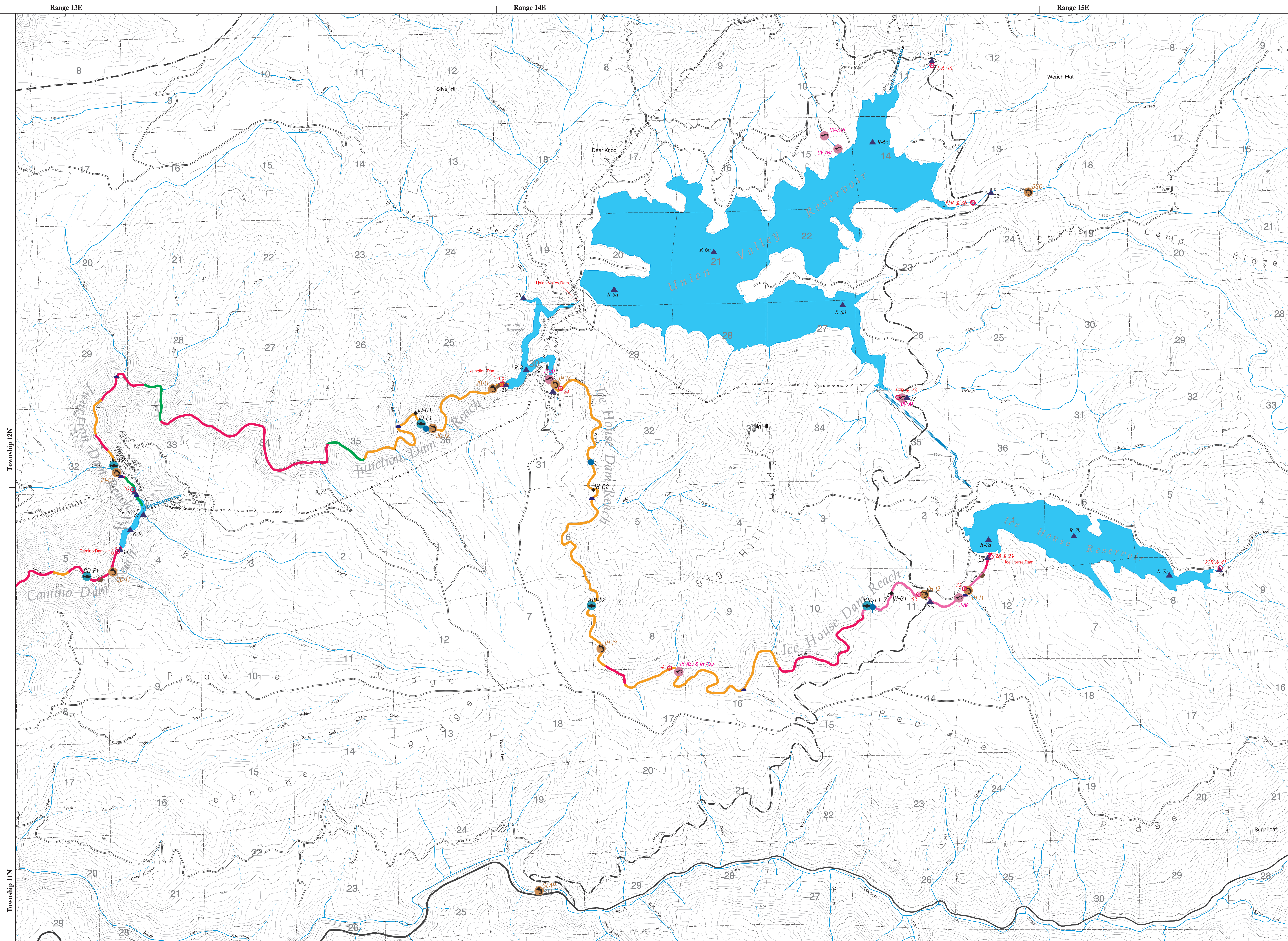
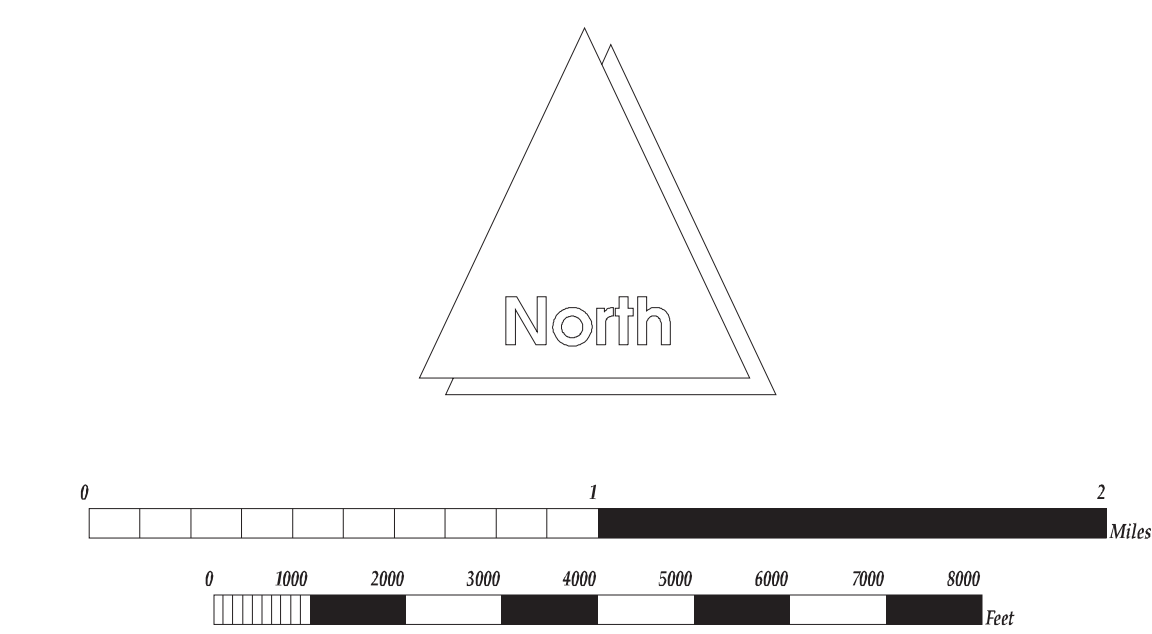
- A
- Aa+
- B
- C
- C/E/D
- C/E
- C/F
- C/F/G
- E/F/C
- F
- (denotes division between reaches)

Level II/III Sites

- ◆ Rosgen Level II Site Locations

AQUATIC SURVEYS

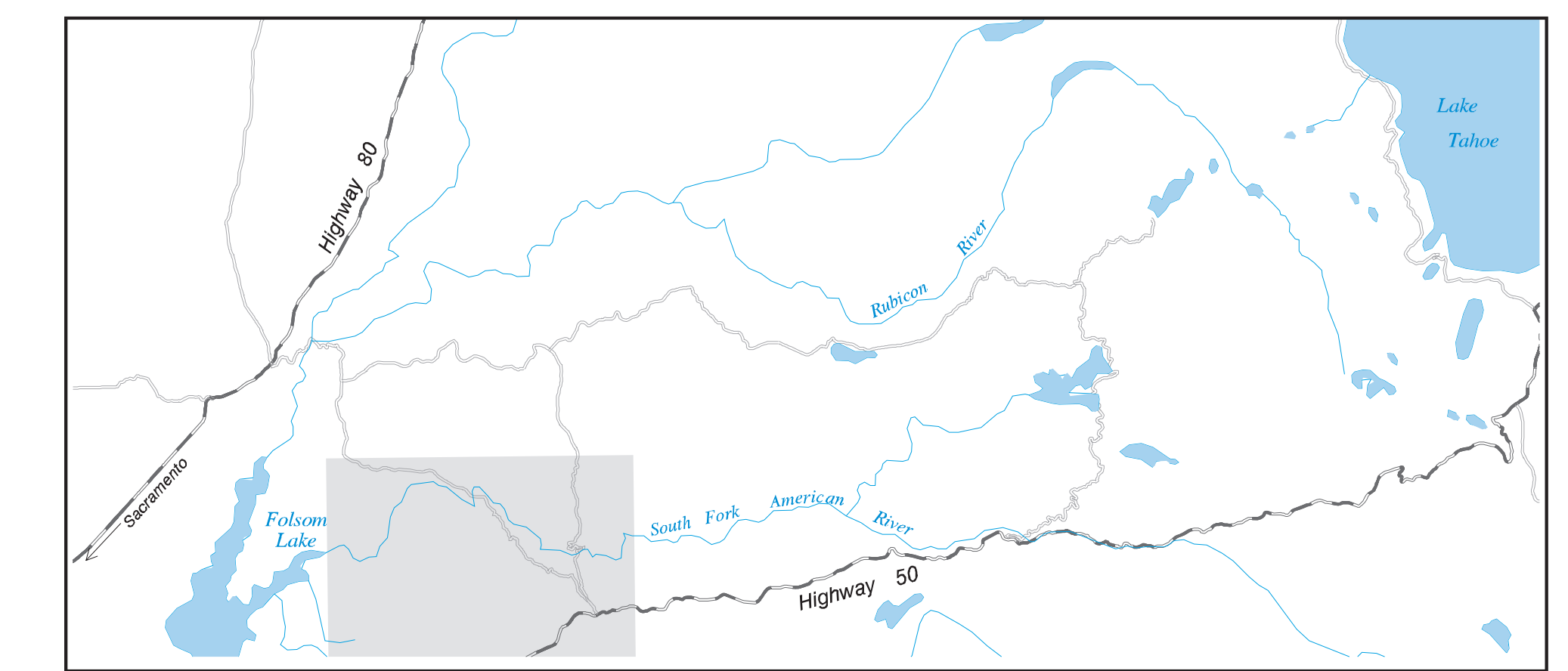
- Amphibians
- Fish
- Invertebrates
- PHABSIM Sites
- ▲ Water Quality Stations
- Water Temperature Sensor Sites
- Hydrology Nodes
- Hydrology Nodes/Gaging Stations
- Flow Fluctuation Fish Sample



Upper American River Project

FERC Project No. 2101

Western Area



GEOMORPHOLOGY

Level II/III Site Maps with
Level I Stream Type Delineation

Level I Stream Types

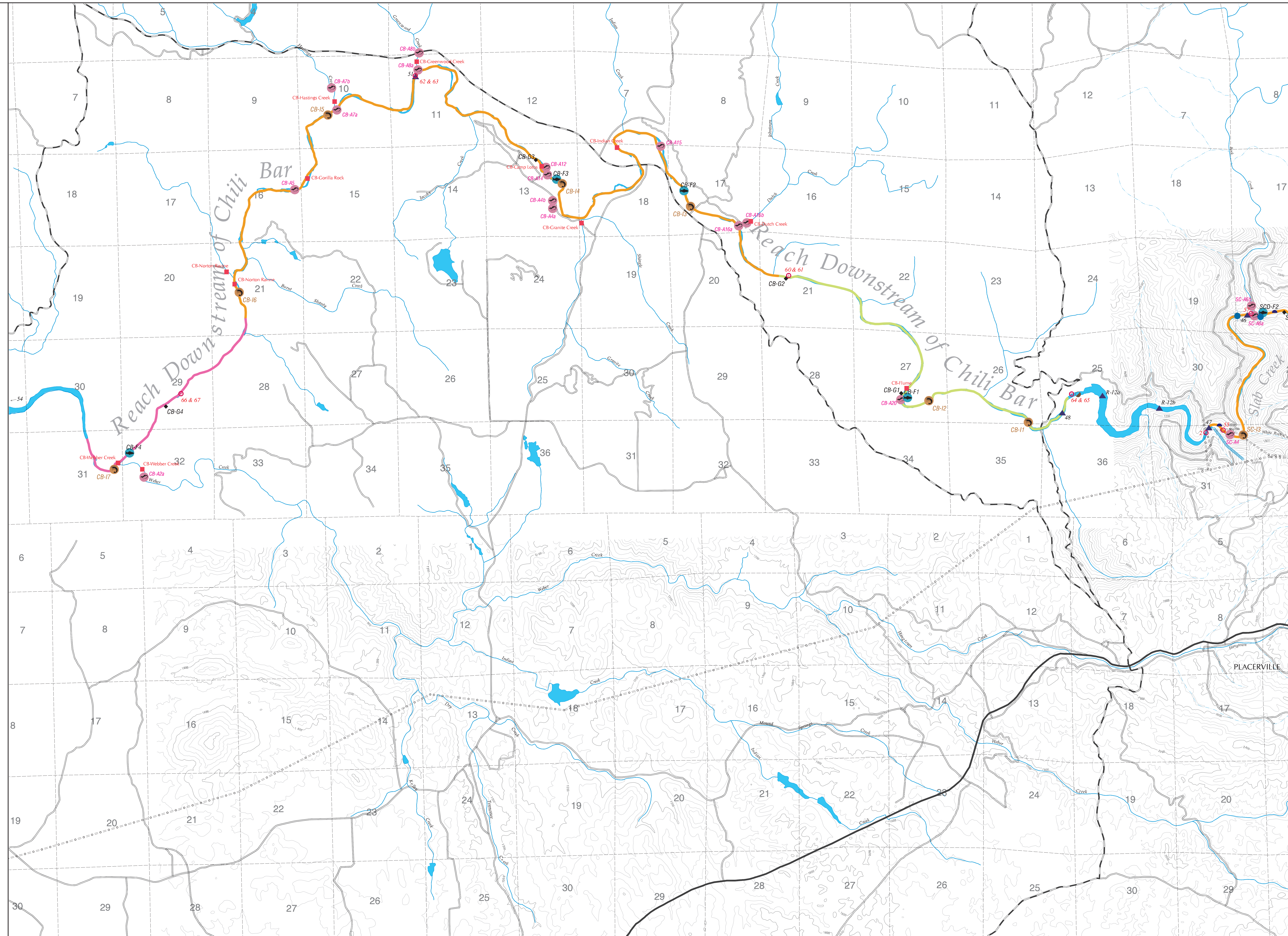
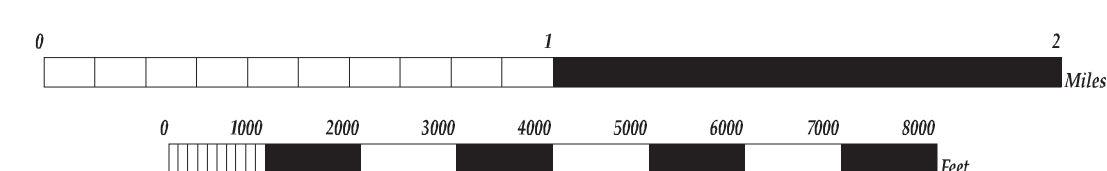
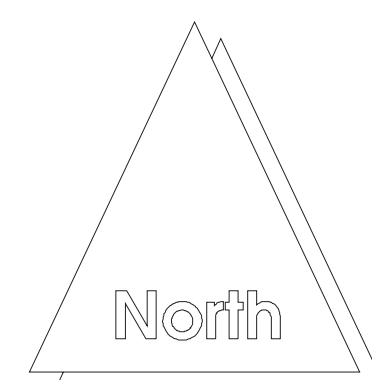
- A
- Aa+
- B
- C
- C/E/D
- C/E
- C/F
- C/F/G
- E/F/C
- F
- (denotes division between reaches)

Level II/III Sites

- ◆ Rosgen Level II Site Locations

AQUATIC SURVEYS

- Amphibians
- Fish
- Invertebrates
- PHABSIM Sites
- ▲ Water Quality Stations
- Water Temperature Sensor Sites
- Hydrology Nodes
- Hydrology Nodes/Gaging Stations
- Flow Fluctuation Fish Sample



Upper American River Project

FERC Project No. 2101

Southwest Area



GEOMORPHOLOGY

Level II/III Site Maps with
Level I Stream Type Delineation

Level I Stream Types

- A
- Aa+
- B
- C
- C/E/D
- C/E
- C/F
- C/F/G
- E/F/C
- F
- (denotes division between reaches)

Level II/III Sites

- Rosgen Level II Site Locations

AQUATIC SURVEYS

- Amphibians
- Fish
- Invertebrates
- PHABSIM Sites
- Water Quality Stations
- Water Temperature Sensor Sites
- Hydrology Nodes
- Hydrology Nodes/Gaging Stations
- Flow Fluctuation Fish Sample

