

Bear-Human Interaction 2016 Monitoring Report

Hydro License Implementation • June 2017

Upper American River Project

FERC Project No. 2101

TABLE OF CONTENTS

1.0 INTRODUCTION AND BACKGROUND	3
2.0 MONITORING PLAN OBJECTIVES	3
3.0 MONITORING SITES	4
4.0 METHODS	5
5.0 RESULTS AND DISCUSSION	Error! Bookmark not defined.
6.0 UPCOMING SURVEY PLANS	7
7.0 LITERATURE CITED	7

LIST OF TABLES

Table 1 Sites monitored in 2016	4
---------------------------------------	---

LIST OF FIGURES

Figure 1 Bear Monitoring Study Area Overview	8
--	---

Attachment 1. Data Form	9
Attachment 2. Sample Signage	10
Attachment 3. Completed Forms from 2016 Season	11
Attachment 4. Table Summarizing Bear-Human Interactions	12

Acronyms and Abbreviations

Acronym	Definition
CDFW	California Department of Fish and Wildlife
FERC	Federal Energy Regulatory Commission
GPS	Global Positioning System
SMUD	Sacramento Municipal Utility District
SWRCB	State Water Resources Control Board
UARP	Upper American River Project
USDA	U.S. Department of Agriculture
USFS	U.S. Forest Service
USFWS	U.S. Fish and Wildlife Service

1 INTRODUCTION AND BACKGROUND

This Bear-Human Interaction Monitoring Report (Report) addresses monitoring requirements set forth in Sacramento Municipal Utility District's (SMUD) Bear-Human Interaction Monitoring Plan (SMUD 2015). The requirements for this Plan are found in U.S. Forest Service (USFS) 4(e) Condition 31.1, located in Appendix B, of the Federal Energy Regulatory Commission's (FERC) Order Issuing New License for the Upper American River Project (UARP), dated July 23, 2014. The Plan was developed in consultation with the USFS, California Department of Fish and Wildlife (CDFW), and U.S. Fish and Wildlife Services (USFWS). The Plan was filed with FERC on May 21, 2015.

The objectives of the Plan are to determine if the measures (primarily installation of bear-proof food and trash receptacles and public education) implemented by the resources agencies are successful in decreasing the number of bear incidents in the UARP. Additionally, the monitoring will help inform resource managers where there are still problems that may need to be addressed with additional bear management measures. This Report presents the results of implementing the Plan in 2016.

The UARP lies within El Dorado and Sacramento counties, primarily within lands of the Eldorado National Forest. The UARP consists of three major storage reservoirs: Loon Lake, Union Valley, and Ice House (with a combined capacity of approximately 379,000 acre-feet), eight smaller regulating or diversion reservoirs, and eight powerhouses. The UARP also includes recreation facilities containing over 700 campsites, five boat ramps, hiking paths, and bicycle trails at the reservoirs.

2 MONITORING PLAN OBJECTIVES

The primary objectives and rationale for the bear management monitoring program, as described in Condition No. 31 – Monitoring Program of the USFS' 4(e) conditions, are:

Monitor effectiveness of measures related to bear management using a method acceptable to FS, FWS, and CDFG.

This monitoring will help determine if bear management measures used to keep bear populations away from recreation sites within the UARP are effective. As described in Settlement Agreement Article 1-6.10;

If, over a 5-year period, monitoring indicates that the number of bear/human interaction incidents does not decline or decrease in severity, the licensee shall work with FS, FWS, and CDFG to identify and implement additional measures necessary to reduce such problems.

Additionally, the results of this monitoring may be useful to SMUD and the USFS when planning and prioritizing locations to install bear-proof food lockers.

3 MONITORING SITES

Monitoring was carried out at developed, UARP-related recreation facilities within the Project area (Figure 1 and Table 1). These included day-use and overnight facilities; both hosted and unhosted.

Table 1. Sites monitored in 2016

Facility	Existing Lockers/Trash	Hosted Site	Monitored	Comment
Campgrounds				
Northshore RV CG	N	N	Y	Monitoring form box installed
Loon Lake Family CG; Boat Launch RV CG; Equestrian CG; Group CG; and Equestrian Group CG	Y	Y	Y	Host administering multiple LL facilities was responsible for collecting forms
Red Fir CG	N	N	Y	Monitoring form box installed
Pleasant Boat In CG	N	N	N	Monitoring Box not deployed here
Airport Flat CG	Y	N	Y	Monitoring form box installed
Gerle Creek CG	Y	Y	Y	
Sunset Family CG	N	Y	Y	
Fashoda CG	Y	Y	Y	
West Point CG	N	N	Y	Monitoring form box installed
Yellowjacket CG	N	Y	Y	
Wench Family and Group CG	N	Y	Y	
Wolf Creek Family and Group CG	Y	Y	Y	
Azalea Cove CG	N	N	Y	Monitoring form box installed
Big Silver Group CG	N	N	Y	Monitoring form box installed
Camino Cove CG	N	N	Y	Monitoring form box installed
Jones Fork CG	Y	N	Y	Monitoring form box installed
Lone Rock CG	Y	N	Y	Monitoring form box installed
Ice House Family CG	N	Y	Y	
Northwind CG	N	N	Y	Monitoring form box installed
Strawberry Point CG	N	N	Y	Monitoring form box installed

Day Use Areas				
Angel Creek	N	N	Y	Monitoring form box installed
Gerle Creek	N	Y	Y	Host supplied with forms
Ice House	N	Y	Y	Host supplied with forms
Fashoda	N	Y	Y	Host supplied with forms
Jones Fork	N	N	Y	Monitoring form box installed at CG
Big Silver	N	N	Y	Monitoring form box installed at CG
Wench Creek	Y	Y	Y	CG Host supplied with forms
Loon Lake – Desolation Wilderness	N	N	Y	Monitoring form box installed at TH

4 METHODS

In 2016, SMUD initiated bear-human interaction monitoring according to the Plan. SMUD prepared a data form using the model included in the Plan (Attachment 1). The form was enhanced with graphics and some minor changes were made to the text and questions. The forms were distributed to the USFS recreation concessionaire, American Land and Leisure (AL&L) at a meeting on May 25, 2016. At the meeting, which was hosted by the USFS, SMUD described the monitoring program and requested help from AL&L to educate visitors and provide them with forms in the event of a bear interaction. In addition, a representative from the CDFW spoke about the importance of educating visitors on the importance of keeping food stored safely and securely from bears. CDFW also supplied a number of “Keep Me Wild” posters to put up at the campgrounds. SMUD provided the USFS and AL&L staff with approximately 100 forms to be distributed among the various campground hosts.

In early June SMUD installed deposit boxes with forms at 13 unhosted recreation sites in the Crystal Basin (Table 1). The boxes were placed at official notification boards and were designed with a transparent face so that forms could be easily seen. In addition, signage was added to the information boards to encourage visitors to report incidents using the forms in the boxes (Attachment 2).

SMUD staff made several follow-up visits to a subset of the locations to check-in with camp hosts to see if more forms were needed and whether bears encounters were being recorded. A sample of unhosted sites was also checked for forms. The sites that were checked all had forms and no completed forms were observed in the collection boxes. Following the conclusion of the recreation season in early October, SMUD contacted the USFS to ask for assistance in collecting the completed forms from camp hosts and unhosted sites. The completed forms were collected by USFS staff and provided to SMUD. The results of monitoring are presented below in Section 5.

5 RESULTS AND DISCUSSION

SMUD received 20 completed forms from the USFS for the 2016 recreation season (Attachment 3), the results of which are summarized in an excel table located in Attachment 4. The forms came from 5 different sites. Two of the reported incidents came from sites that are not part of the monitoring program (Capps Crossing and Millionaire Camp). There was one reported incident from Big Silver Group Campground; one from Wolf Creek Campground; and 16 from Gerle Creek Campground. The earliest reported incident was from 5/29/16 and the last report was from 8/14/2016. Only one incident was reported from an unhosted site (Big Silver Group Camp).

Eighty percent of the recorded interactions came from Gerle Creek Campground. Given the number of interactions and comments from the host at the site (personal communication), there appears to be at least one bear that has become conditioned to associate humans camping with food and shows little fear of humans. Gerle Creek Campground does have bear-proof food lockers and trash receptacles and in most cases these were properly used. In 5 of 16 cases food was present outside of a bear-resistant container and food or other non-food products was consumed by the bear. In 6 of the interactions, property damage occurred, from minor bite marks to a dented pick-up cab. Interestingly, 10 of the interactions at Gerle Creek Campground occurred over about one week between July 17th and 25th. At the two other Crystal Basin sites where incidents were reported, Wolf Creek and Big Silver, food was present outside of a bear resistant container and food was consumed by the bear.

The results of this year's monitoring suggest that bears were not much of a problem at most Crystal Basin recreation sites in 2016 except for Gerle Creek. The other incidents appear to have been isolated events since there were no patterns of behavior recorded. It is possible, however, that some incidents were either not recorded by visitors or that not all forms were recovered at the close of the season. Since this is the first year of monitoring one could expect that there would be some issues that resulted in under-reporting.

For this reason SMUD plans to make several adjustments to the monitoring in 2017 as described in the list below:

1. SMUD will ensure that there are adequate signs to inform visitors about the monitoring program at all of the recreation sites.
2. SMUD or the USFS will check-in on the campground hosts at least once during the season to interview the hosts about bear interactions.
3. SMUD will coordinate with the USFS recreation staff to ensure that the form boxes at unhosted sites are checked regularly and restocked with pencils and forms, as needed.

4. At the end of the recreation season, SMUD will interview the campground hosts to get feedback on the bear incidents that may have occurred and to solicit input on any needed improvements to the monitoring.

In terms of bear management, SMUD will provide the results of the monitoring to the USFS and CDFW and any management decisions or actions will be at the discretion of those agencies. SMUD will facilitate any management decisions as appropriate.

6 UPCOMING SURVEY PLANS

In accordance with the Plan, monitoring will occur annually during the recreation season (approximately Memorial Day through the end of September). For 2017, SMUD will ensure that each site, including hosted sites, has adequate signage to educate the public about bears and to inform visitors of the monitoring program. SMUD will attend the annual kick-off meeting with the AL&L and the USFS to present the details of the monitoring program and enlist the support and assistance of the camp hosts and USFS recreation staff. For the monitoring to be effective it will be imperative to make sure the visiting public is informed about the monitoring program and the importance of filling out forms following any incidents. It is equally important that all sites have forms available throughout the year and that all forms are collected and returned to SMUD at the close of the season.

7 LITERATURE CITED

FERC (Federal Energy Regulatory Commission). 2014. Federal Energy Regulatory Commission Order 148 FERC 62,070 Issuing New License for the Sacramento Municipal Utility District Upper American River Hydroelectric Project No. 2101. Issued July 23, 2014.

SMUD. 2015. Bear Human Interaction Monitoring Plan. Hydro License Implementation for the Upper American River Project (FERC Project No. 2101). May 2015.

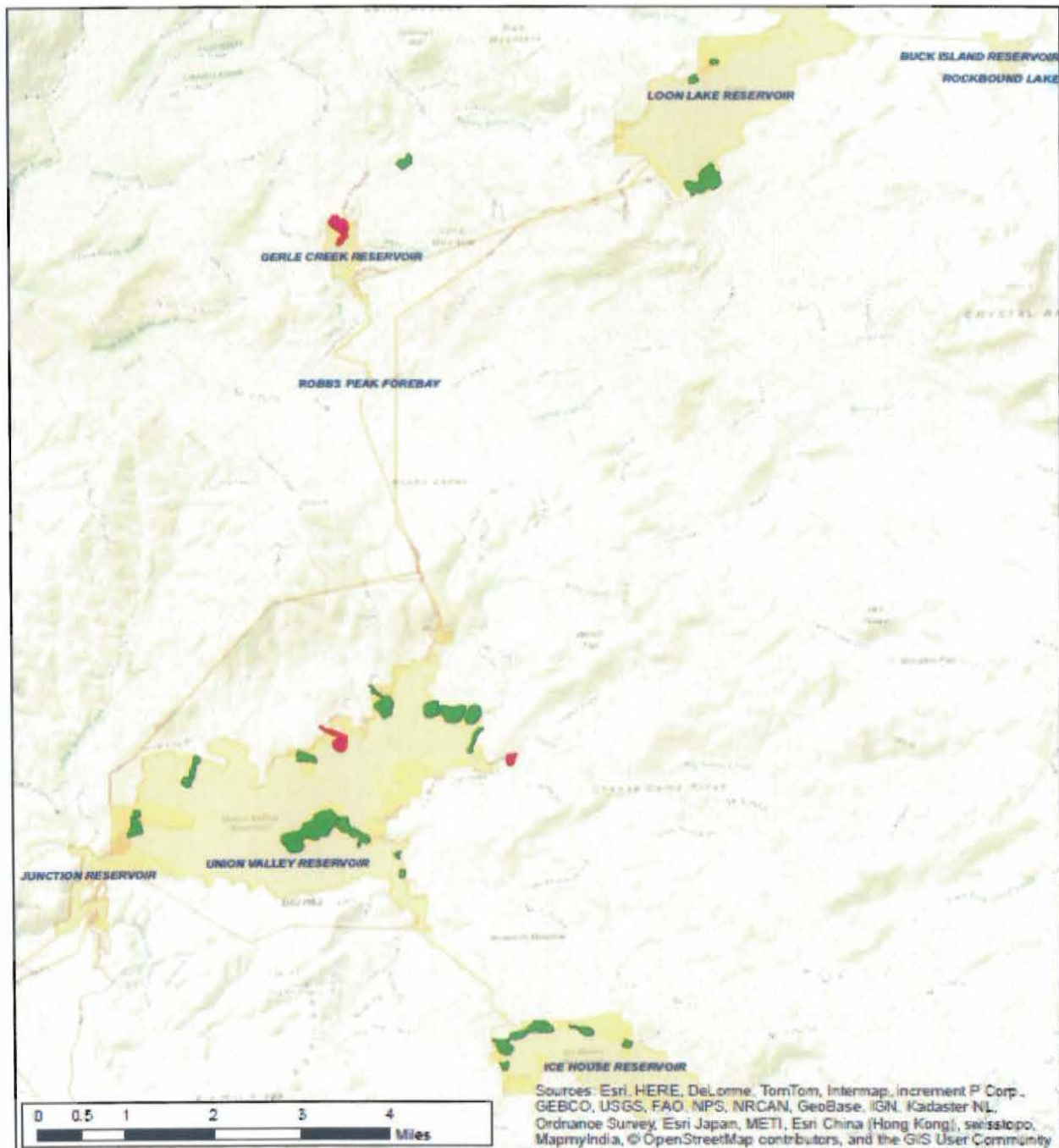





Figure 1. Locations of Bear-Human Interactions
 2016 Crystal Basin Bear Monitoring

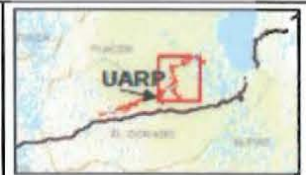


Map Features

-  Location of Bear Interaction
-  Monitored Locations
-  FERC Boundary



1:100,000





Attachment 1



BEAR ENCOUNTER FORM

Bear Management Monitoring

Crystal Basin Recreation Area



Use a separate form for each individual incident. For example, if the same bear enters two campsites while people are present, a person from each campsite should report the specifics of their encounter. Give completed forms to campground hosts. If your recreation site has no host, forms should be placed in the appropriate receptacle at the site or dropped off at the Crystal Basin Information Station on Ice House Road between Ice House Reservoir and Union Valley Reservoir. Forms also can be dropped off at the Pacific Ranger Station at 7887 Highway 50, Pollock Pines, CA 95726.

1. Person(s) involved:

Name: _____

Address: _____

City: _____ State: _____

Zip code: _____ Phone: _____

Country: _____

2. Describe yourself:

- a. Visitor
- b. Camp host
- c. USFS employee
- d. Contractor
- e. Other _____

3. Visitor activity:

- a. Camping – developed campground
- b. Camping – undeveloped campsite/wilderness
- c. Day use area
- d. Hiking on maintained trail
- e. Other _____

4. Group size: _____

(number of people who encountered the bear)

5. Time of encounter: Month: _____ Day: _____ Year: _____ Time: _____ am/pm

For office use only:

Report collected by: _____ (USFS/camp host)

Date: _____

6. Location of encounter:

- a. Airport Flat campground
- b. Angel Creek day use area
- c. Azalea Cove campground
- d. Big Silver group campground
- e. Camino Cove campground
- f. Fashoda campground
- g. Gerle Creek campground complex
- h. Ice House campground/
boat launch/day use area
- i. Jones Fork campground
- j. Junction Reservoir boat launch
- k. Lone Rock campground
- l. Loon Lake campground/boat ramp
- m. Loon Lake chalet
- n. Northshore campground
- o. Northshore RV campground
- p. Pleasant campground
- q. Red Fir group campground
- r. Strawberry Point campground
- s. Sunset campground/boat launch
- t. Union Valley bike trail
- u. Wench Creek campground
- v. Wench Creek group campground
- w. West Point campground/boat launch
- x. Wolf Creek campground
- y. Wolf Creek group campground
- z. Yellowjacket campground/boat launch
- Other _____

7. Number and description of bears (how many, what color, size, adult or cub, sex?):

8. Did the bear(s) harm anyone?

a. No b. Yes* (describe) _____

9. What were you doing before you saw the bear?

10. What was the bear doing when you first saw it?

* If there was a physical encounter with the bear or a bear was harmed in the incident, please report to the USFS Ranger and California Department of Fish and Wildlife.

11. How did the bear react to you?

12. What did you do then?

13. How did the bear react to your response?

14. How close did you come to the bear (how many feet)?

15. Was human food present?

- a. Food not in bear resistant container
- b. Food in bear resistant container
- c. Food odor only
- d. Food hung in tree
- e. No food present
- f. Unknown

16. Did the bear eat any human food?

- a. No
- b. Yes (what?) _____
- c. Unknown

17. Did the bear damage property?

- a. No
- b. Yes (list property and estimate costs) _____

18. Details of bear-human interaction (optional):





Attachment 2

ATTENTION

In the event that you have an
Encounter with a Bear
at or near this facility, please fill out a
[Bear-Human Interaction Monitoring Form.](#)

The forms are located in a box near this sign and can be placed back into the box upon completion or dropped off with a Camp Host or USFS personnel.

Your effort will help us better manage our important wildlife resources.

Thank you.





Attachment 3



BEAR ENCOUNTER FORM

Bear Management Monitoring
Crystal Basin Recreation Area



Use a separate form for each individual incident. For example, if the same bear enters two campsites while people are present, a person from each campsite should report the specifics of their encounter. Give completed forms to campground hosts. If your recreation site has no host, forms should be placed in the appropriate receptacle at the site or dropped off at the Crystal Basin Information Station on Ice House Road between Ice House Reservoir and Union Valley Reservoir. Forms also can be dropped off at the Pacific Ranger Station at 7887 Highway 50, Pollock Pines, CA 95726.

For office use only:

Report collected by: _____ (USFS/camp host)

Date: _____

1. Person(s) involved:

Name: RON CHAN

Address: 885 Leo Way

City: OAKLAND State: CA

Zip code: 94611 Phone: _____

Country: USA rchan547@yahoo.com

2. Describe yourself:

- a. Visitor
- b. Camp host
- c. USFS employee
- d. Contractor
- e. Other _____

3. Visitor activity:

- a. Camping – developed campground
- b. Camping – undeveloped campsite/wilderness
- c. Day use area
- d. Hiking on maintained trail
- e. Other _____

4. Group size: 28 at Camp. Only 1 affected

(number of people who encountered the bear)

5. Time of encounter: Month: 8 Day: 14 Year: 2016 Time: 2:30 am pm

6. Location of encounter:

- a. Airport Flat campground
- b. Angel Creek day use area
- c. Azalea Cove campground
- d. Big Silver group campground
- e. Camino Cove campground
- f. Fashoda campground
- g. Gerle Creek campground complex
- h. Ice House campground/
boat launch/day use area
- i. Jones Fork campground
- j. Junction Reservoir boat launch
- k. Lone Rock campground
- l. Loon Lake campground/boat ramp
- m. Loon Lake chalet
- n. Northshore campground
- o. Northshore RV campground
- p. Pleasant campground
- q. Red Fir group campground
- r. Strawberry Point campground
- s. Sunset campground/boat launch
- t. Union Valley bike trail
- u. Wench Creek campground
- v. Wench Creek group campground
- w. West Point campground/boat launch
- x. Wolf Creek campground
- y. Wolf Creek group campground
- z. Yellowjacket campground/boat launch
- Other _____

7. Number and description of bears (how many, what color, size, adult or cub, sex?):

1 Bear

8. Did the bear(s) harm anyone?

a. No b. Yes* (describe) _____

9. What were you doing before you saw the bear?

Sleeping

10. What was the bear doing when you first saw it?

Eating the contents of the cooler

* If there was a physical encounter with the bear or a bear was harmed in the incident, please report to the USFS Ranger and California Department of Fish and Wildlife.

11. How did the bear react to you?

It ran off with several items.

12. What did you do then?

Investigate semi-empty cooler

13. How did the bear react to your response?

See #11

14. How close did you come to the bear (how many feet)?

Tent was 10-12 feet from the cooler

15. Was human food present?

- a. Food not in bear resistant container
- b. Food in bear resistant container
- c. Food odor only
- d. Food hung in tree
- e. No food present
- f. Unknown

Ice chest

Rangers said they had bear Boxes for years, But never installed them!

16. Did the bear eat any human food?

- a. No
- b. Yes (what?) Cheese, Hot Dog, Pancake, Salad Mix, Mustard, Mayo, lunch meat, Bell Peppers
- c. Unknown

17. Did the bear damage property?

a. No b. Yes (list property and estimate costs) _____

18. Details of bear-human interaction (optional):

Big Silver Campground does not have bear resistant containers installed. No way of protecting myself from any bear encounter.





BEAR ENCOUNTER FORM

Bear Management Monitoring
Crystal Basin Recreation Area



Use a separate form for each individual incident. For example, if the same bear enters two campsites while people are present, a person from each campsite should report the specifics of their encounter. Give completed forms to campground hosts. If your recreation site has no host, forms should be placed in the appropriate receptacle at the site or dropped off at the Crystal Basin Information Station on Ice House Road between Ice House Reservoir and Union Valley Reservoir. Forms also can be dropped off at the Pacific Ranger Station at 7887 Highway 50, Pollock Pines, CA 95726.

1. Person(s) involved:

Name: Stephanie Schroeder
Address: 6942 Inspiration lane
City: Sacramento State: Ca
Zip code: 95823 Phone: (916) 613-4887
Country: USA

2. Describe yourself:

- a. Visitor
- b. Camp host
- c. USFS employee
- d. Contractor
- e. Other _____

3. Visitor activity:

- a. Camping – developed campground ca
- b. Camping – undeveloped campsite/wilderness
- c. Day use area
- d. Hiking on maintained trail
- e. Other _____

4. Group size: _____

(number of people who encountered the bear)

5. Time of encounter: Month: 8 Day: 13 Year: 2016 Time: 3 am/pm

For office use only:
Report collected by: _____ (USFS/camp host)
Date: _____

6. Location of encounter:

- a. Airport Flat campground
- b. Angel Creek day use area
- c. Azalea Cove campground
- d. Big Silver group campground
- e. Camino Cove campground
- f. Fashoda campground
- g. Gerle Creek campground complex
- h. Ice House campground/
boat launch/day use area
- i. Jones Fork campground
- j. Junction Reservoir boat launch
- k. Lone Rock campground
- l. Loon Lake campground/boat ramp
- m. Loon Lake chalet
- n. Northshore campground
- o. Northshore RV campground
- p. Pleasant campground
- q. Red Fir group campground
- r. Strawberry Point campground
- s. Sunset campground/boat launch
- t. Union Valley bike trail
- u. Wench Creek campground
- v. Wench Creek group campground
- w. West Point campground/boat launch
- x. Wolf Creek campground
- y. Wolf Creek group campground
- z. Yellowjacket campground/boat launch
- Other Free Camping of 12/32
near Millstream
camp

7. Number and description of bears (how many, what color, size, adult or cub, sex?):

1 Black bear, Adult, 4ft approx
on all 4 paws
Large paw prints

8. Did the bear(s) harm anyone?

a. No b. Yes* (describe)

9. What were you doing before you saw the bear?

sleeping

10. What was the bear doing when you first saw it?

We personally did not see it but it tore apart our

* If there was a physical encounter with the bear or a bear was harmed in the incident, please report to the USFS Ranger and California Department of Fish and Wildlife.

fire ring (There were bear tracks) and it tore into
our neighbors ice chest and they
scared it off to wards us

11. How did the bear react to you?

according to the neighbor when he started making
noise it left but he said that it came through

12. What did you do then?

a few times
They just went back to bed

13. How did the bear react to your response?

Didn't seem to care just moved on

14. How close did you come to the bear (how many feet)?

Our neighbor said he was no more than
5-10 ft away
from it

15. Was human food present?

- a. Food not in bear resistant container
- b. Food in bear resistant container
- c. Food odor only
- d. Food hung in tree
- e. No food present
- f. Unknown

for us we kept all food in the car.
our neighbor had
his food in
a cooler

16. Did the bear eat any human food?

- a. No
- b. Yes (what?)
- c. Unknown

17. Did the bear damage property?

- a. No
- b. Yes (list property and estimate costs)

18. Details of bear-human interaction (optional):

ruined their cooler - unknown





BEAR ENCOUNTER FORM
Bear Management Monitoring
Crystal Basin Recreation Area



Use a separate form for each individual incident. For example, if the same bear enters two campsites while people are present, a person from each campsite should report the specifics of their encounter. Give completed forms to campground hosts. If your recreation site has no host, forms should be placed in the appropriate receptacle at the site or dropped off at the Crystal Basin Information Station on Ice House Road between Ice House Reservoir and Union Valley Reservoir. Forms also can be dropped off at the Pacific Ranger Station at 7887 Highway 50, Pollock Pines, CA 95726.

For office use only:
Report collected by: _____ (USFS/camp host)
Date: _____

1. Person(s) involved:

Name: Trevor Coker - Erin Velguth
Address: 879 Village Run Drive
City: Galt State: CA
Zip code: 95632 Phone: 916 202 0648
Country: _____

2. Describe yourself:

- a. Visitor
- b. Camp host
- c. USFS employee
- d. Contractor
- e. Other _____

3. Visitor activity:

- a. Camping – developed campground
- b. Camping – undeveloped campsite/wilderness
- c. Day use area
- d. Hiking on maintained trail
- e. Other _____

4. Group size: 4
(number of people who encountered the bear)

5. Time of encounter: Month: 8 Day: 3 Year: 2016 Time: 4AM am/pm

6. Location of encounter:

- a. Airport Flat campground
- b. Angel Creek day use area
- c. Azalea Cove campground
- d. Big Silver group campground
- e. Camino Cove campground
- f. Fashoda campground
- g. Gerle Creek campground complex
- h. Ice House campground/
boat launch/day use area
- i. Jones Fork campground
- j. Junction Reservoir boat launch
- k. Lone Rock campground
- l. Loon Lake campground/boat ramp
- m. Loon Lake chalet
- n. Northshore campground
- o. Northshore RV campground
- p. Pleasant campground
- q. Red Fir group campground
- r. Strawberry Point campground
- s. Sunset campground/boat launch
- t. Union Valley bike trail
- u. Wench Creek campground
- v. Wench Creek group campground
- w. West Point campground/boat launch
- x. Wolf Creek campground
- y. Wolf Creek group campground
- z. Yellowjacket campground/boat launch
- Other _____

7. Number and description of bears (how many, what color, size, adult or cub, sex?):

1 Large Brown Adult

8. Did the bear(s) harm anyone?

a. No b. Yes* (describe) No

9. What were you doing before you saw the bear?

Sleeping

10. What was the bear doing when you first saw it?

Playing with a bee trap

* If there was a physical encounter with the bear or a bear was harmed in the incident, please report to the USFS Ranger and California Department of Fish and Wildlife.

11. How did the bear react to you?

When she saw us she came towards us; then

12. What did you do then?

we banged pots and pans

13. How did the bear react to your response?

and she ran off.

14. How close did you come to the bear (how many feet)?

4-5 feet

15. Was human food present?

- a. Food not in bear resistant container
- b. Food in bear resistant container
- c. Food odor only
- d. Food hung in tree - piece of bacon in the bee trap d/t meat bees
- e. No food present
- f. Unknown

16. Did the bear eat any human food?

- a. No
- b. Yes (what?) _____
- c. Unknown

17. Did the bear damage property?

- a. No
- b. Yes (list property and estimate costs) _____

18. Details of bear-human interaction (optional):





BEAR ENCOUNTER FORM

Bear Management Monitoring

Crystal Basin Recreation Area



Use a separate form for each individual incident. For example, if the same bear enters two campsites while people are present, a person from each campsite should report the specifics of their encounter. Give completed forms to campground hosts. If your recreation site has no host, forms should be placed in the appropriate receptacle at the site or dropped off at the Crystal Basin Information Station on Ice House Road between Ice House Reservoir and Union Valley Reservoir. Forms also can be dropped off at the Pacific Ranger Station at 7887 Highway 50, Pollock Pines, CA 95726.

1. Person(s) involved:

Name: Crichton, Michael
Address: 184 Rancho Circle
City: Huber State: CA
Zip code: 95603 Phone: 530 350-8179
Country: Placer

2. Describe yourself:

- a. Visitor
- b. Camp host
- c. USFS employee
- d. Contractor
- e. Other _____

3. Visitor activity:

- a. Camping – developed campground
- b. Camping – undeveloped campsite/wilderness
- c. Day use area
- d. Hiking on maintained trail
- e. Other _____

4. Group size:

4 - sleeping - neighbors saw bear.
(number of people who encountered the bear)

5. Time of encounter:

Month: 8 Day: 2 Year: 2016 Time: 3:00 am/pm

For office use only:

Report collected by: _____ (USFS/camp host)

Date: _____

6. Location of encounter:

- a. Airport Flat campground
- b. Angel Creek day use area
- c. Azalea Cove campground
- d. Big Silver group campground
- e. Camino Cove campground
- f. Fashoda campground
- g. Gerle Creek campground complex
- h. Ice House campground/
boat launch/day use area
- i. Jones Fork campground
- j. Junction Reservoir boat launch
- k. Lone Rock campground
- l. Loon Lake campground/boat ramp
- m. Loon Lake chalet
- n. Northshore campground
- o. Northshore RV campground
- p. Pleasant campground
- q. Red Fir group campground
- r. Strawberry Point campground
- s. Sunset campground/boat launch
- t. Union Valley bike trail
- u. Wench Creek campground
- v. Wench Creek group campground
- w. West Point campground/boat launch
- x. Wolf Creek campground
- y. Wolf Creek group campground
- z. Yellowjacket campground/boat launch
- Other _____

7. Number and description of bears (how many, what color, size, adult or cub, sex?):

8. Did the bear(s) harm anyone?

a. No b. Yes* (describe) NO

9. What were you doing before you saw the bear?

10. What was the bear doing when you first saw it?

* If there was a physical encounter with the bear or a bear was harmed in the incident, please report to the USFS Ranger and California Department of Fish and Wildlife.

11. How did the bear react to you?

12. What did you do then?

13. How did the bear react to your response?

14. How close did you come to the bear (how many feet)?

15. Was human food present?

- a. Food not in bear resistant container
- b. Food in bear resistant container
- c. Food odor only
- d. Food hung in tree
- e. No food present
- f. Unknown

16. Did the bear eat any human food?

a. No b. Yes (what?) yes: meat, cheese, yogurt
c. Unknown

17. Did the bear damage property?

a. No b. Yes (list property and estimate costs) NO

18. Details of bear-human interaction (optional):



Dented top of truck cab

Name:

TIMOTHY SWOBNY

7112 LAVAL CT.

CARMICHAEL, CA. 95608

VISITOR / CAMPING ~~FR~~ ^{WED - MON} 7/25
GOBLE CREEK BRIDGE SOUTH / WEST
JUST ME

ENCOUNTER 11:00 PM TO 3:00
ONE FRIDAY NIGHT
2 EACH SAT - SUN.

ONE BEAR BLACK
NO HARM MADE EFFORT TO
MOVE AWAY AT SOUND OF VOICE

GOING THROUGH KITCHEN STOVE

BEAR RUNS OFF RIGHT AWAY
BLASTED AIR HORN

WALKED UP TO TENT ONE NIGHT
5 FEET FROM

NO HUMAN FOOD PRESENT
SUNDAY NIGHT CAVED IN CABON TRUCK



For office use only:

Report collected by: _____ (USFS/camp host)

Date: _____



BEAR ENCOUNTER FORM
Bear Management Monitoring
Crystal Basin Recreation Area



Use a separate form for each individual incident. For example, if the same bear enters two campsites while people are present, a person from each campsite should report the specifics of their encounter. Give completed forms to campground hosts. If your recreation site has no host, forms should be placed in the appropriate receptacle at the site or dropped off at the Crystal Basin Information Station on Ice House Road between Ice House Reservoir and Union Valley Reservoir. Forms also can be dropped off at the Pacific Ranger Station at 7887 Highway 50, Pollock Pines, CA 95726.

1. Person(s) involved:

Name: THEO REVLOCK & DAWN MA

Address: 4243 25TH ST.

City: SAN FRANCISCO State: CA

Zip code: 94114 Phone: 415 810 9670

Country: USA

2. Describe yourself:

- a. Visitor
- b. Camp host
- c. USFS employee
- d. Contractor
- e. Other _____

3. Visitor activity:

- a. Camping – developed campground
- b. Camping – undeveloped campsite/wilderness
- c. Day use area
- d. Hiking on maintained trail
- e. Other _____

4. Group size: 2

(number of people who encountered the bear)

5. Time of encounter: Month: 7 Day: 24 Year: 10 Time: 3 am/pm

6. Location of encounter:

- a. Airport Flat campground
- b. Angel Creek day use area
- c. Azalea Cove campground
- d. Big Silver group campground
- e. Camino Cove campground
- f. Fashoda campground
- g. Gerle Creek campground complex #18
- h. Ice House campground/boat launch/day use area
- i. Jones Fork campground
- j. Junction Reservoir boat launch
- k. Lone Rock campground
- l. Loon Lake campground/boat ramp
- m. Loon Lake chalet
- n. Northshore campground
- o. Northshore RV campground
- p. Pleasant campground
- q. Red Fir group campground
- r. Strawberry Point campground
- s. Sunset campground/boat launch
- t. Union Valley bike trail
- u. Wench Creek campground
- v. Wench Creek group campground
- w. West Point campground/boat launch
- x. Wolf Creek campground
- y. Wolf Creek group campground
- z. Yellowjacket campground/boat launch
- Other _____

7. Number and description of bears (how many, what color, size, adult or cub, sex?):

(1) BROWN, ADULT, 6'-5"± (WE HAVE A VW WESTFALIA

8. Did the bear(s) harm anyone?

CAMPER BUS & IT STOOD UP TO MATCH HEIGHT)

a. No b. Yes* (describe) _____

9. What were you doing before you saw the bear?

SLEEPING

10. What was the bear doing when you first saw it?

TRYING TO GET INTO CAR FR. FRONT PASSENGER SIDE

* If there was a physical encounter with the bear or a bear was harmed in the incident, please report to the USFS Ranger and California Department of Fish and Wildlife.

11. How did the bear react to you?

IGNORED SCREAMING, POT SMASHING, STICK HITTING TABLE

12. What did you do then?

SCREAM MORE & APPROACHED IT; & THREW A LOG

13. How did the bear react to your response?

WALKED AWAY, DIDN'T GET INSIDE CAR

14. How close did you come to the bear (how many feet)?

40'± (FR. TABLE TO PARKED CAR)

15. Was human food present?

- a. Food not in bear resistant container
- b. Food in bear resistant container
- c. Food odor only
- d. Food hung in tree
- e. No food present
- f. Unknown

16. Did the bear eat any human food?

- a. No
- b. Yes (what?) _____
- c. Unknown

17. Did the bear damage property?

- a. No
- b. Yes (list property and estimate costs) BROKE PASSENGER FRONT WINDOW
DAMAGED DOOR & MIRROR (ON PASSENGER SIDE)

18. Details of bear-human interaction (optional):

FIRST HEARD BEAR SNIFFING & GROWLING AROUND TENT.

THEN HITTING POT TO SCARE HIM AWAY. HEARD HIM WENT

AROUND CAMPSITE & FINALLY RETURNED TRYING TO GET INTO CAR.





BEAR ENCOUNTER FORM

Bear Management Monitoring

Crystal Basin Recreation Area



Use a separate form for each individual incident. For example, if the same bear enters two campsites while people are present, a person from each campsite should report the specifics of their encounter. Give completed forms to campground hosts. If your recreation site has no host, forms should be placed in the appropriate receptacle at the site or dropped off at the Crystal Basin Information Station on Ice House Road between Ice House Reservoir and Union Valley Reservoir. Forms also can be dropped off at the Pacific Ranger Station at 7887 Highway 50, Pollock Pines, CA 95726.

1. Person(s) involved:

Name: BRIAN SOWERI
Address: PO BOX 21084
City: CASTRO VALLEY State: CA
Zip code: 94546 Phone: 510 499 3363
Country: _____

2. Describe yourself:

- a. Visitor
- b. Camp host
- c. USFS employee
- d. Contractor
- e. Other _____

3. Visitor activity:

- a. Camping – developed campground
- b. Camping – undeveloped campsite/wilderness
- c. Day use area
- d. Hiking on maintained trail
- e. Other _____

4. Group size: 3
(number of people who encountered the bear)

5. Time of encounter: ^{incident #1} Month: 7 Day: 21 Year: 16 Time: 210 am/pm

^{incident #2} W Month: 7 Day: 22 Year: 16 Time: 250 AM
T
F

For office use only:

Report collected by: _____ (USFS/camp host)

Date: _____

6. Location of encounter:

- a. Airport Flat campground
- b. Angel Creek day use area
- c. Azalea Cove campground
- d. Big Silver group campground
- e. Camino Cove campground
- f. Fashoda campground
- g. Gerle Creek campground complex
- h. Ice House campground/
boat launch/day use area
- i. Jones Fork campground
- j. Junction Reservoir boat launch
- k. Lone Rock campground
- l. Loon Lake campground/boat ramp
- m. Loon Lake chalet
- n. Northshore campground
- o. Northshore RV campground
- p. Pleasant campground
- q. Red Fir group campground
- r. Strawberry Point campground
- s. Sunset campground/boat launch
- t. Union Valley bike trail
- u. Wench Creek campground
- v. Wench Creek group campground
- w. West Point campground/boat launch
- x. Wolf Creek campground
- y. Wolf Creek group campground
- z. Yellowjacket campground/boat launch
- Other _____

7. Number and description of bears (how many, what color, size, adult or cub, sex?):

one, young, Brown

8. Did the bear(s) harm anyone?

a. No b. Yes* (describe) _____

9. What were you doing before you saw the bear?

sleeping

10. What was the bear doing when you first saw it?

incident
#1 sitting on top of boat in trailer

* If there was a physical encounter with the bear or a bear was harmed in the incident, please report to the USFS Ranger and California Department of Fish and Wildlife.

incident
#2 playing with carp on Bear Box

11. How did the bear react to you?

#1 Jumped in Bed of truck, Back on Boat. Jumped out when I yelled + ~~he~~ He Ran
#2, ran away

12. What did you do then?

yelled at him

13. How did the bear react to your response?

He Ran

14. How close did you come to the bear (how many feet)?

8 feet

15. Was human food present?

- #1 a. Food not in bear resistant container
 - #2 b. Food in bear resistant container
 - c. Food odor only
 - d. Food hung in tree
 - e. No food present
 - f. Unknown
- stray apple in trailer*

16. Did the bear eat any human food?

a. No b. Yes (what?) _____
c. Unknown

17. Did the bear damage property?

a. No b. Yes (list property and estimate costs) _____

18. Details of bear-human interaction (optional):





BEAR ENCOUNTER FORM

Bear Management Monitoring

Crystal Basin Recreation Area



Use a separate form for each individual incident. For example, if the same bear enters two campsites while people are present, a person from each campsite should report the specifics of their encounter. Give completed forms to campground hosts. If your recreation site has no host, forms should be placed in the appropriate receptacle at the site or dropped off at the Crystal Basin Information Station on Ice House Road between Ice House Reservoir and Union Valley Reservoir. Forms also can be dropped off at the Pacific Ranger Station at 7887 Highway 50, Pollock Pines, CA 95726.

1. Person(s) involved:

Name: Paul Moore
Address: 212 Brookdale Dr, #15
City: Vacaville State: CA
Zip code: 95687 Phone: 707-761-5981
Country: USA

2. Describe yourself:

- a. Visitor
- b. Camp host
- c. USFS employee
- d. Contractor
- e. Other _____

3. Visitor activity:

- a. Camping – developed campground
- b. Camping – undeveloped campsite/wilderness
- c. Day use area
- d. Hiking on maintained trail
- e. Other _____

4. Group size: 2
(number of people who encountered the bear)

5. Time of encounter: Month: 7/2/16 Day: Thurs Year: 2016 Time: 3:00 (am/pm)

For office use only:
Report collected by: _____ (USFS/camp host)
Date: _____

6. Location of encounter:

- a. Airport Flat campground
- b. Angel Creek day use area
- c. Azalea Cove campground
- d. Big Silver group campground
- e. Camino Cove campground
- f. Fashoda campground
- g. Gerle Creek campground complex
- h. Ice House campground/
boat launch/day use area
- i. Jones Fork campground
- j. Junction Reservoir boat launch
- k. Lone Rock campground
- l. Loon Lake campground/boat ramp
- m. Loon Lake chalet
- n. Northshore campground
- o. Northshore RV campground
- p. Pleasant campground
- q. Red Fir group campground
- r. Strawberry Point campground
- s. Sunset campground/boat launch
- t. Union Valley bike trail
- u. Wench Creek campground
- v. Wench Creek group campground
- w. West Point campground/boat launch
- x. Wolf Creek campground
- y. Wolf Creek group campground
- z. Yellowjacket campground/boat launch
- Other _____

7. Number and description of bears (how many, what color, size, adult or cub, sex?):

Didn't see - heard outside tent

8. Did the bear(s) harm anyone?

a. No b. Yes* (describe) _____

9. What were you doing before you saw the bear?

sleeping

10. What was the bear doing when you first saw it?

He was sniffing + rubbing tent w/ nose and grunting

* If there was a physical encounter with the bear or a bear was harmed in the incident, please report to the USFS Ranger and California Department of Fish and Wildlife.

11. How did the bear react to you?

He went to bear box and pawed it + rubbed nose

12. What did you do then?

(have prints on) on window of car -
we honked horn from inside tent

13. How did the bear react to your response?

He walked away to next campsite and knocked

14. How close did you come to the bear (how many feet)?

he was sniffing tent near where my head was - it woke me up.

things over -
The visitor at that sight
scared him away w/ yelling

15. Was human food present?

- a. Food not in bear resistant container
- b. Food in bear resistant container
- c. Food odor only
- d. Food hung in tree
- e. No food present
- f. Unknown

in tent
bear box had food locked.
car had no food.

16. Did the bear eat any human food?

- a. No
- b. Yes (what?) _____
- c. Unknown

17. Did the bear damage property?

- a. No
- b. Yes (list property and estimate costs) _____

18. Details of bear-human interaction (optional):





BEAR ENCOUNTER FORM

Bear Management Monitoring
Crystal Basin Recreation Area



Use a separate form for each individual incident. For example, if the same bear enters two campsites while people are present, a person from each campsite should report the specifics of their encounter. Give completed forms to campground hosts. If your recreation site has no host, forms should be placed in the appropriate receptacle at the site or dropped off at the Crystal Basin Information Station on Ice House Road between Ice House Reservoir and Union Valley Reservoir. Forms also can be dropped off at the Pacific Ranger Station at 7887 Highway 50, Pollock Pines, CA 95726.

For office use only:

Report collected by: _____ (USFS/camp host)

Date: _____

1. Person(s) involved:

Name: BRIAN + AMY SOWERS

Address: PO BOX 21084

City: CASTRO VALLEY State: CA

Zip code: 94546 Phone: 510 499 3363

Country: _____

2. Describe yourself:

- a. Visitor
- b. Camp host
- c. USFS employee
- d. Contractor
- e. Other _____

3. Visitor activity:

- a. Camping – developed campground
- b. Camping – undeveloped campsite/wilderness
- c. Day use area
- d. Hiking on maintained trail
- e. Other _____

4. Group size: 3
(number of people who encountered the bear)

5. Time of encounter: Month: 7 Day: 20 Year: 16 Time: 10 am pm

6. Location of encounter:

- a. Airport Flat campground
- b. Angel Creek day use area
- c. Azalea Cove campground
- d. Big Silver group campground
- e. Camino Cove campground
- f. Fashoda campground
- g. Gerle Creek campground complex
- h. Ice House campground/
boat launch/day use area
- i. Jones Fork campground
- j. Junction Reservoir boat launch
- k. Lone Rock campground
- l. Loon Lake campground/boat ramp
- m. Loon Lake chalet
- n. Northshore campground
- o. Northshore RV campground
- p. Pleasant campground
- q. Red Fir group campground
- r. Strawberry Point campground
- s. Sunset campground/boat launch
- t. Union Valley bike trail
- u. Wench Creek campground
- v. Wench Creek group campground
- w. West Point campground/boat launch
- x. Wolf Creek campground
- y. Wolf Creek group campground
- z. Yellowjacket campground/boat launch
- Other _____

7. Number and description of bears (how many, what color, size, adult or cub, sex?):

1, black?, small-ish, not sure, not sure

8. Did the bear(s) harm anyone?

- a. No
- b. Yes* (describe) _____

9. What were you doing before you saw the bear?

Talking at picnic table

10. What was the bear doing when you first saw it?

Shaking camp kitchen

* If there was a physical encounter with the bear or a bear was harmed in the incident, please report to the USFS Ranger and California Department of Fish and Wildlife.

11. How did the bear react to you?

ran off a little

12. What did you do then?

bang pans to scare off

13. How did the bear react to your response?

ran away

14. How close did you come to the bear (how many feet)?

3-4 feet

15. Was human food present?

- a. Food not in bear resistant container
- b. Food in bear resistant container
- c. Food odor only
- d. Food hung in tree
- e. No food present
- f. Unknown

16. Did the bear eat any human food?

- a. No
- b. Yes (what?) _____
- c. Unknown

17. Did the bear damage property?

- a. No
- b. Yes (list property and estimate costs) _____

18. Details of bear-human interaction (optional):





BEAR ENCOUNTER FORM

Bear Management Monitoring
Crystal Basin Recreation Area



Use a separate form for each individual incident. For example, if the same bear enters two campsites while people are present, a person from each campsite should report the specifics of their encounter. Give completed forms to campground hosts. If your recreation site has no host, forms should be placed in the appropriate receptacle at the site or dropped off at the Crystal Basin Information Station on Ice House Road between Ice House Reservoir and Union Valley Reservoir. Forms also can be dropped off at the Pacific Ranger Station at 7887 Highway 50, Pollock Pines, CA 95726.

1. Person(s) involved:

Name: TROY + Annie Maher
Address: 512 Teton Ct
City: Petaluma Ca State: CA
Zip code: 94954 Phone: 707769 0148
Country: Sonoma

2. Describe yourself:

- a. Visitor
- b. Camp host
- c. USFS employee
- d. Contractor
- e. Other _____

3. Visitor activity:

- a. Camping – developed campground
- b. Camping – undeveloped campsite/wilderness
- c. Day use area
- d. Hiking on maintained trail
- e. Other _____

4. Group size: 2
(number of people who encountered the bear)

5. Time of encounter: Month: 7 Day: 20 Year: 16 Time: 3:00 am/pm

For office use only:

Report collected by: _____ (USFS/camp host)

Date: _____

6. Location of encounter:

- a. Airport Flat campground
- b. Angel Creek day use area
- c. Azalea Cove campground
- d. Big Silver group campground
- e. Camino Cove campground
- f. Fashoda campground
- g. Gerle Creek campground complex
- h. Ice House campground/
boat launch/day use area
- i. Jones Fork campground
- j. Junction Reservoir boat launch
- k. Lone Rock campground
- l. Loon Lake campground/boat ramp
- m. Loon Lake chalet
- n. Northshore campground
- o. Northshore RV campground
- p. Pleasant campground
- q. Red Fir group campground
- r. Strawberry Point campground
- s. Sunset campground/boat launch
- t. Union Valley bike trail
- u. Wench Creek campground
- v. Wench Creek group campground
- w. West Point campground/boat launch
- x. Wolf Creek campground
- y. Wolf Creek group campground
- z. Yellowjacket campground/boat launch
- Other _____

7. Number and description of bears (how many, what color, size, adult or cub, sex?):

1 large

8. Did the bear(s) harm anyone?

a. No b. Yes* (describe) _____

9. What were you doing before you saw the bear?

Sleeping

10. What was the bear doing when you first saw it?

Chewing on empty water bottles

* If there was a physical encounter with the bear or a bear was harmed in the incident, please report to the USFS Ranger and California Department of Fish and Wildlife.

11. How did the bear react to you?

N/A

12. What did you do then?

N/A

13. How did the bear react to your response?

N/A

14. How close did you come to the bear (how many feet)?

N/A

15. Was human food present?

- a. Food not in bear resistant container
- b. Food in bear resistant container
- c. Food odor only
- d. Food hung in tree
- e. No food present
- f. Unknown

16. Did the bear eat any human food?

a. No b. Yes (what?) _____
 c. Unknown

17. Did the bear damage property?

a. No b. Yes (list property and estimate costs) _____

18. Details of bear-human interaction (optional):

we were in trailer heard bear in
campground crunching water bottles +
battering things around - then moved on to
our neighboring campground + destroyed
their ice box.





BEAR ENCOUNTER FORM

Bear Management Monitoring

Crystal Basin Recreation Area



Use a separate form for each individual incident. For example, if the same bear enters two campsites while people are present, a person from each campsite should report the specifics of their encounter. Give completed forms to campground hosts. If your recreation site has no host, forms should be placed in the appropriate receptacle at the site or dropped off at the Crystal Basin Information Station on Ice House Road between Ice House Reservoir and Union Valley Reservoir. Forms also can be dropped off at the Pacific Ranger Station at 7887 Highway 50, Pollock Pines, CA 95726.

For office use only:

Report collected by: _____ (USFS/camp host)

Date: _____

1. Person(s) involved:

Name: Pam Stuart

Address: 10475 Santa Clara

City: Corning State: CA

Zip code: 96021 Phone: 530-829-0833

Country: USA

2. Describe yourself:

- a. Visitor
- b. Camp host
- c. USFS employee
- d. Contractor
- e. Other _____

3. Visitor activity:

- a. Camping – developed campground
- b. Camping – undeveloped campsite/wilderness
- c. Day use area
- d. Hiking on maintained trail
- e. Other _____

4. Group size: 2

(number of people who encountered the bear)

5. Time of encounter: Month: 7 Day: 19 Year: 2016 Time: early am/pm

Will 3A

6. Location of encounter:

- a. Airport Flat campground
- b. Angel Creek day use area
- c. Azalea Cove campground
- d. Big Silver group campground
- e. Camino Cove campground
- f. Fashoda campground
- g. Gerle Creek campground complex
- h. Ice House campground/
boat launch/day use area
- i. Jones Fork campground
- j. Junction Reservoir boat launch
- k. Lone Rock campground
- l. Loon Lake campground/boat ramp
- m. Loon Lake chalet
- n. Northshore campground
- o. Northshore RV campground
- p. Pleasant campground
- q. Red Fir group campground
- r. Strawberry Point campground
- s. Sunset campground/boat launch
- t. Union Valley bike trail
- u. Wench Creek campground
- v. Wench Creek group campground
- w. West Point campground/boat launch
- x. Wolf Creek campground
- y. Wolf Creek group campground
- z. Yellowjacket campground/boat launch
- Other _____

7. Number and description of bears (how many, what color, size, adult or cub, sex?):

one brown

8. Did the bear(s) harm anyone?

a. No b. Yes* (describe) no

9. What were you doing before you saw the bear?

sleeping

10. What was the bear doing when you first saw it?

first heard it on vehicles, opened velcro windows and it ran

If there was a physical encounter with the bear or a bear was harmed in the incident, please report to the USFS Ranger and California Department of Fish and Wildlife.

11. How did the bear react to you?

Ran from the noise

12. What did you do then?

returned to sleep

13. How did the bear react to your response?

left

14. How close did you come to the bear (how many feet)?

4 feet - we were in cars over camper

15. Was human food present? NO

- a. Food not in bear resistant container
- b. Food in bear resistant container
- c. Food odor only
- d. Food hung in tree
- e. No food present
- f. Unknown

16. Did the bear eat any human food?

not this encounter
a. No b. Yes (what?)
c. Unknown

17. Did the bear damage property?

only left footprints and both vehicles
a. No b. Yes (list property and estimate costs)

18. Details of bear-human interaction (optional):

slight dent in hood





BEAR ENCOUNTER FORM

Bear Management Monitoring

Crystal Basin Recreation Area



Use a separate form for each individual incident. For example, if the same bear enters two campsites while people are present, a person from each campsite should report the specifics of their encounter. Give completed forms to campground hosts. If your recreation site has no host, forms should be placed in the appropriate receptacle at the site or dropped off at the Crystal Basin Information Station on Ice House Road between Ice House Reservoir and Union Valley Reservoir. Forms also can be dropped off at the Pacific Ranger Station at 7887 Highway 50, Pollock Pines, CA 95726.

1. Person(s) involved:

Name: Sara Stuart
Address: 6477 Santa Clara Rd.
City: Corning State: CA
Zip code: 96021 9812 Phone: 530-586-2540
Country: USA

2. Describe yourself:

- a. Visitor
- b. Camp host
- c. USFS employee
- d. Contractor
- e. Other _____

3. Visitor activity:

- a. Camping – developed campground
- b. Camping – undeveloped campsite/wilderness
- c. Day use area
- d. Hiking on maintained trail
- e. Other _____

4. Group size: 1 in trailer 3 in tents in this site
(number of people who encountered the bear)

5. Time of encounter: Month: July Day: 19 Year: 2014 Time: 2-3 am/pm

For office use only:

Report collected by: _____ (USFS/camp host)

Date: _____

6. Location of encounter:

- a. Airport Flat campground
- b. Angel Creek day use area
- c. Azalea Cove campground
- d. Big Silver group campground
- e. Camino Cove campground
- f. Fashoda campground
- g. Gerle Creek campground complex
- h. Ice House campground/
boat launch/day use area
- i. Jones Fork campground
- j. Junction Reservoir boat launch
- k. Lone Rock campground
- l. Loon Lake campground/boat ramp
- m. Loon Lake chalet
- n. Northshore campground
- o. Northshore RV campground
- p. Pleasant campground
- q. Red Fir group campground
- r. Strawberry Point campground
- s. Sunset campground/boat launch
- t. Union Valley bike trail
- u. Wench Creek campground
- v. Wench Creek group campground
- w. West Point campground/boat launch
- x. Wolf Creek campground
- y. Wolf Creek group campground
- z. Yellowjacket campground/boat launch
- Other _____

7. Number and description of bears (how many, what color, size, adult or cub, sex?):

1

8. Did the bear(s) harm anyone?

a. No b. Yes* (describe) _____

9. What were you doing before you ~~saw~~ ^{heard} the bear?

sleeping

10. What was the bear doing when you first ~~saw~~ ^{heard} it?

shook my trailer like an earthquake

* If there was a physical encounter with the bear or a bear was harmed in the incident, please report to the USFS Ranger and California Department of Fish and Wildlife.

11. How did the bear react to you?

NA

12. What did you do then?

went back to sleep

13. How did the bear react to your response?

NA

14. How close did you come to the bear (how many feet)?

inches: only the trailer wall between us

15. Was human food present?

- a. Food not in bear resistant container
- b. Food in bear resistant container
- c. Food odor only
- d. Food hung in tree
- e. No food present left out
- f. Unknown

16. Did the bear eat any human food?

- a. No
- b. Yes (what?) _____
- c. Unknown

17. Did the bear damage property?

- a. No
- b. Yes (list property and estimate costs) \$25.00 spare tire cover to trailer - paw prints on trailer.

18. Details of bear-human interaction (optional):

Also clawed up tablecloth covering bear box with water on it. water jug also pushed over. no food out - all in bear box

has - additional bear activity - knocked over the gas stove and broke the it inoperable. Cost \$180.00

-knocked over the gas element rendering





BEAR ENCOUNTER FORM

Bear Management Monitoring

Crystal Basin Recreation Area



Use a separate form for each individual incident. For example, if the same bear enters two campsites while people are present, a person from each campsite should report the specifics of their encounter. Give completed forms to campground hosts. If your recreation site has no host, forms should be placed in the appropriate receptacle at the site or dropped off at the Crystal Basin Information Station on Ice House Road between Ice House Reservoir and Union Valley Reservoir. Forms also can be dropped off at the Pacific Ranger Station at 7887 Highway 50, Pollock Pines, CA 95726.

1. Person(s) involved:

Name: Leah & Javier Fernandez
Address: 4441 Maitland Ave
City: Santa Rosa State: CA
Zip code: 95407 Phone: 707-217-3751
Country: USA

2. Describe yourself:

- a. Visitor
- b. Camp host
- c. USFS employee
- d. Contractor
- e. Other _____

3. Visitor activity:

- a. Camping – developed campground
- b. Camping – undeveloped campsite/wilderness
- c. Day use area
- d. Hiking on maintained trail
- e. Other _____

4. Group size: 4
(number of people who encountered the bear)

5. Time of encounter: Month: ⁰7 Day: 19 Year: 16 Time: 3:30 (am/pm)
₍₂₇₎ 20 — — — middle of night

For office use only:

Report collected by: _____ (USFS/camp host)

Date: _____

6. Location of encounter:

- a. Airport Flat campground
- b. Angel Creek day use area
- c. Azalea Cove campground
- d. Big Silver group campground
- e. Camino Cove campground
- f. Fashoda campground
- g. Gerle Creek campground complex
- h. Ice House campground/
boat launch/day use area
- i. Jones Fork campground
- j. Junction Reservoir boat launch
- k. Lone Rock campground
- l. Loon Lake campground/boat ramp
- m. Loon Lake chalet
- n. Northshore campground
- o. Northshore RV campground
- p. Pleasant campground
- q. Red Fir group campground
- r. Strawberry Point campground
- s. Sunset campground/boat launch
- t. Union Valley bike trail
- u. Wench Creek campground
- v. Wench Creek group campground
- w. West Point campground/boat launch
- x. Wolf Creek campground
- y. Wolf Creek group campground
- z. Yellowjacket campground/boat launch
- Other _____

7. Number and description of bears (how many, what color, size, adult or cub, sex?):

1? large

8. Did the bear(s) harm anyone?

a. (No) b. Yes* (describe) _____

9. What were you doing before you saw the bear?

sleeping

10. What was the bear doing when you first saw it?

Eating out of our ice chest

* If there was a physical encounter with the bear or a bear was harmed in the incident, please report to the USFS Ranger and California Department of Fish and Wildlife.

11. How did the bear react to you?

didn't see us

12. What did you do then?

1 stayed in tent
2 stayed in tent and started car remotely to scare off

13. How did the bear react to your response?

1 ate for a while then left
2 left when we started the car

14. How close did you come to the bear (how many feet)?

1 20? 2 30?

15. Was human food present?

- 1 a. Food not in bear resistant container
- 2 b. Food in bear resistant container
- c. Food odor only
- d. Food hung in tree
- e. No food present
- f. Unknown

16. Did the bear eat any human food?

- 1 a. No b. Yes (what?) plums, chicken, cheese, grapes
- c. Unknown

2 **17. Did the bear damage property?**

- a. No b. Yes (list property and estimate costs) cooler \$100?
- 3 No

18. Details of bear-human interaction (optional):

1 ate food out of ice chest, then left, came back ^{1/2 hour later} and sniffed around, then left

2 flipped our tupperware with the charcoal, then ran off when we started car





BEAR ENCOUNTER FORM

Bear Management Monitoring

Crystal Basin Recreation Area



Use a separate form for each individual incident. For example, if the same bear enters two campsites while people are present, a person from each campsite should report the specifics of their encounter. Give completed forms to campground hosts. If your recreation site has no host, forms should be placed in the appropriate receptacle at the site or dropped off at the Crystal Basin Information Station on Ice House Road between Ice House Reservoir and Union Valley Reservoir. Forms also can be dropped off at the Pacific Ranger Station at 7887 Highway 50, Pollock Pines, CA 95726.

1. Person(s) involved:

Name: Julie Falkenstein
Address: 1102 W Springer Dr
City: Turlock State: CA
Zip code: 95382 Phone: 209-765-7902
Country: USA

2. Describe yourself:

- a. Visitor
- b. Camp host
- c. USFS employee
- d. Contractor
- e. Other _____

3. Visitor activity:

- a. Camping – developed campground
- b. Camping – undeveloped campsite/wilderness
- c. Day use area
- d. Hiking on maintained trail
- e. Other _____

4. Group size: 2

(number of people who encountered the bear)

5. Time of encounter: Month: 7 Day: 17 Year: 2016 Time: 1:30 am/pm

For office use only:

Report collected by: _____ (USFS/camp host)

Date: _____

Notes by E. Koenigs follow-up call

6. Location of encounter:

- a. Airport Flat campground
- b. Angel Creek day use area
- c. Azalea Cove campground
- d. Big Silver group campground
- e. Camino Cove campground
- f. Fashoda campground
- g. Gerle Creek campground complex
- h. Ice House campground/
boat launch/day use area
- i. Jones Fork campground
- j. Junction Reservoir boat launch
- k. Lone Rock campground
- l. Loon Lake campground/boat ramp
- m. Loon Lake chalet
- n. Northshore campground
- o. Northshore RV campground
- p. Pleasant campground
- q. Red Fir group campground
- r. Strawberry Point campground
- s. Sunset campground/boat launch
- t. Union Valley bike trail
- u. Wench Creek campground
- v. Wench Creek group campground
- w. West Point campground/boat launch
- x. Wolf Creek campground
- y. Wolf Creek group campground
- z. Yellowjacket campground/boat launch
- Other _____

7. Number and description of bears (how many, what color, size, adult or cub, sex?):

one bear - did not see him. Neighbor described him/her as slumped chest high with 4 feet on ground & belly the length of a wingspan on a 5'5" woman.

8. Did the bear(s) harm anyone?

- a. No
- b. Yes* (describe) _____

9. What were you doing before you saw the bear?

in bed, in tent, listening to bear walk through camp.

10. What was the bear doing when you first saw it?

walking through camp - started @ the dumpster -> our camp - looking

* If there was a physical encounter with the bear or a bear was harmed in the incident, please report to the USFS Ranger and California Department of Fish and Wildlife.

through this - and apparently walking on the table, flinging water jugs around. Then he/she snuffed around the tent & pushed the corner in & onto my bed.

11. How did the bear react to you?

I screamed. - he left.

12. What did you do then?

I flung out the 2 chopsticks, 1 lotion & 1 wipes container (wipes were strongly scented & likely responsible)

13. How did the bear react to your response?

14. How close did you come to the bear (how many feet)?

2 ft? my bed was w/in 2 feet of end of tent.

15. Was human food present?

- a. Food not in bear resistant container
- b. Food in bear resistant container
- c. Food odor only
- d. Food hung in tree
- e. No food present
- f. Unknown

there was 2 chopsticks, 1 lotion, 1 strongly scented thing of hand wipes.

16. Did the bear eat any human food?

- a. No
- b. Yes (what?) ate bar of tea tree/olive oil soap
- c. Unknown

17. Did the bear damage property?

- a. No
- b. Yes (list property and estimate costs) solar shower \$12, wicker chair \$10, holes in 6 person tent, several yrs old.

18. Details of bear-human interaction (optional):

we had water jugs (uncovered) locked in car - he tried unsuccessfully to get into car. He flung the solar shower w/ water off bear box, ate soap, walked across table (we have a good print picture), tossed/push around another water jug and ambled over to snuff @ the tent. I was OK until he/she pushed it in on me. Then I wasn't. I think he came back to camp/tent w/ more time





BEAR ENCOUNTER FORM

Bear Management Monitoring

Crystal Basin Recreation Area



Use a separate form for each individual incident. For example, if the same bear enters two campsites while people are present, a person from each campsite should report the specifics of their encounter. Give completed forms to campground hosts. If your recreation site has no host, forms should be placed in the appropriate receptacle at the site or dropped off at the Crystal Basin Information Station on Ice House Road between Ice House Reservoir and Union Valley Reservoir. Forms also can be dropped off at the Pacific Ranger Station at 7887 Highway 50, Pollock Pines, CA 95726.

1. Person(s) involved:

Name: Danny + Timothy CARLSON
Address: P.O. Box 10910
City: Pollock Pines State: CA
Zip code: 95726 Phone: 530 644 8139
Country: USA

2. Describe yourself:

- a. Visitor
- b. Camp host
- c. USFS employee
- d. Contractor
- e. Other _____

3. Visitor activity:

- a. Camping – developed campground
- b. Camping – undeveloped campsite/wilderness
- c. Day use area
- d. Hiking on maintained trail
- e. Other _____

4. Group size: 4
(number of people who encountered the bear)

5. Time of encounter: Month: June Day: 11th Year: 2016 Time: 3:30 am/pm

For office use only:

Report collected by: _____ (USFS/camp host)

Date: _____

6. Location of encounter:

- a. Airport Flat campground
- b. Angel Creek day use area
- c. Azalea Cove campground
- d. Big Silver group campground
- e. Camino Cove campground
- f. Fashoda campground
- g. Gerle Creek campground complex
- h. Ice House campground/
boat launch/day use area
- i. Jones Fork campground
- j. Junction Reservoir boat launch
- k. Lone Rock campground
- l. Loon Lake campground/boat ramp
- m. Loon Lake chalet
- n. Northshore campground
- o. Northshore RV campground
- p. Pleasant campground
- q. Red Fir group campground
- r. Strawberry Point campground
- s. Sunset campground/boat launch
- t. Union Valley bike trail
- u. Wench Creek campground
- v. Wench Creek group campground
- w. West Point campground/boat launch
- x. Wolf Creek campground
- y. Wolf Creek group campground
- z. Yellowjacket campground/boat launch

Other Capps Crossing

7. Number and description of bears (how many, what color, size, adult or cub, sex?):

1 adult Black Bear sex unknown

8. Did the bear(s) harm anyone?

a. No b. Yes* (describe) No

9. What were you doing before you saw the bear?

Sleeping

10. What was the bear doing when you first saw it?

digging thru the trash

* If there was a physical encounter with the bear or a bear was harmed in the incident, please report to the USFS Ranger and California Department of Fish and Wildlife.

11. How did the bear react to you?

Ran South into Camp

12. What did you do then?

13. How did the bear react to your response?

14. How close did you come to the bear (how many feet)?

30 ft.

15. Was human food present?

- a. Food not in bear resistant container
- b. Food in bear resistant container
- c. Food odor only
- d. Food hung in tree
- e. No food present
- f. Unknown

16. Did the bear eat any human food?

- a. No
- b. Yes (what?)
- c. Unknown

17. Did the bear damage property?

- a. No
- b. Yes (list property and estimate costs) No, just a mess

18. Details of bear-human interaction (optional):





BEAR ENCOUNTER FORM

Bear Management Monitoring

Crystal Basin Recreation Area



Use a separate form for each individual incident. For example, if the same bear enters two campsites while people are present, a person from each campsite should report the specifics of their encounter. Give completed forms to campground hosts. If your recreation site has no host, forms should be placed in the appropriate receptacle at the site or dropped off at the Crystal Basin Information Station on Ice House Road between Ice House Reservoir and Union Valley Reservoir. Forms also can be dropped off at the Pacific Ranger Station at 7887 Highway 50, Pollock Pines, CA 95726.

1. Person(s) involved:

Name: Just Johansen

Address: P.O. Box 314

City: Hot Holt State: CA

Zip code: 95234 Phone: 209.465.9277

Country: USA

2. Describe yourself:

- a. Visitor ✓
- b. Camp host
- c. USFS employee
- d. Contractor
- e. Other _____

3. Visitor activity:

- a. Camping – developed campground ✓
- b. Camping – undeveloped campsite/wilderness
- c. Day use area
- d. Hiking on maintained trail
- e. Other _____

4. Group size: 1

(number of people who encountered the bear)

5. Time of encounter: Month: 06 Day: 03 Year: 16 Time: 2130 am/pm pm

For office use only:

Report collected by: _____ (USFS/camp host)

Date: _____

6. Location of encounter:

- a. Airport Flat campground
- b. Angel Creek day use area
- c. Azalea Cove campground
- d. Big Silver group campground
- e. Camino Cove campground
- f. Fashoda campground
- g. Gerle Creek campground complex
- h. Ice House campground/
boat launch/day use area
- i. Jones Fork campground
- j. Junction Reservoir boat launch
- k. Lone Rock campground
- l. Loon Lake campground/boat ramp
- m. Loon Lake chalet
- n. Northshore campground
- o. Northshore RV campground
- p. Pleasant campground
- q. Red Fir group campground
- r. Strawberry Point campground
- s. Sunset campground/boat launch
- t. Union Valley bike trail
- u. Wench Creek campground
- v. Wench Creek group campground
- w. West Point campground/boat launch
- x. Wolf Creek campground
- y. Wolf Creek group campground
- z. Yellowjacket campground/boat launch
- Other _____

7. Number and description of bears (how many, what color, size, adult or cub, sex?):

One dark brown, very large, adult, unknown sex, Bear

8. Did the bear(s) harm anyone?

a. No b. Yes* (describe) _____

9. What were you doing before you saw the bear?

Sleeping

10. What was the bear doing when you first saw it?

Opening an ice chest

* If there was a physical encounter with the bear or a bear was harmed in the incident, please report to the USFS Ranger and California Department of Fish and Wildlife.

11. How did the bear react to you?

No reaction

12. What did you do then?

I told him/her to leave

13. How did the bear react to your response?

No reaction

14. How close did you come to the bear (how many feet)?

10 feet

15. Was human food present?

- a. Food not in bear resistant container
- b. Food in bear resistant container
- c. Food odor only
- d. Food hung in tree
- e. No food present
- f. Unknown

16. Did the bear eat any human food?

- a. No
- b. Yes (what?) Small assortment of fruit
- c. Unknown

17. Did the bear damage property?

- a. No
- b. Yes (list property and estimate costs) Teeth punchers in ice chest.

18. Details of bear-human interaction (optional):

We played a couple hands of gin rummy and shared a beer. Bear seemed to have no fear of humans.





BEAR ENCOUNTER FORM

Bear Management Monitoring

Crystal Basin Recreation Area



Use a separate form for each individual incident. For example, if the same bear enters two campsites while people are present, a person from each campsite should report the specifics of their encounter. Give completed forms to campground hosts. If your recreation site has no host, forms should be placed in the appropriate receptacle at the site or dropped off at the Crystal Basin Information Station on Ice House Road between Ice House Reservoir and Union Valley Reservoir. Forms also can be dropped off at the Pacific Ranger Station at 7887 Highway 50, Pollock Pines, CA 95726.

1. Person(s) involved:

Name: Cheri Tsai, Shin Y. Tsai
Address: 17 Parrott Court
City: San Mateo State: CA
Zip code: 94402 Phone: (415) 857-5638
Country: USA

2. Describe yourself:

- a. Visitor
- b. Camp host
- c. USFS employee
- d. Contractor
- e. Other _____

3. Visitor activity:

- a. Camping – developed campground Gerle Creek
- b. Camping – undeveloped campsite/wilderness
- c. Day use area
- d. Hiking on maintained trail
- e. Other _____

4. Group size: 2 people and 1 dog
(number of people who encountered the bear)

5. Time of encounter: Month: 6 Day: 3 Year: 2016 Time: 10:30-11 am/pm

For office use only:

Report collected by: _____ (USFS/camp host)

Date: _____

6. Location of encounter:

- a. Airport Flat campground
- b. Angel Creek day use area
- c. Azalea Cove campground
- d. Big Silver group campground
- e. Camino Cove campground
- f. Fashoda campground
- g. Gerle Creek campground complex
- h. Ice House campground/
boat launch/day use area
- i. Jones Fork campground
- j. Junction Reservoir boat launch
- k. Lone Rock campground
- l. Loon Lake campground/boat ramp
- m. Loon Lake chalet
- n. Northshore campground
- o. Northshore RV campground
- p. Pleasant campground
- q. Red Fir group campground
- r. Strawberry Point campground
- s. Sunset campground/boat launch
- t. Union Valley bike trail
- u. Wench Creek campground
- v. Wench Creek group campground
- w. West Point campground/boat launch
- x. Wolf Creek campground
- y. Wolf Creek group campground
- z. Yellowjacket campground/boat launch
- Other _____

7. Number and description of bears (how many, what color, size, adult or cub, sex?):

1 bear, dark in color, large adult

8. Did the bear(s) harm anyone?

a. No b. Yes* (describe) _____

9. What were you doing before you saw the bear?

The 2 humans were sitting around the fire pit, and the dog was tied up near picnic table. No lights were on. Our dog

10. What was the bear doing when you first saw it?

started barking at something in the dark. One of us got up and walked over

* If there was a physical encounter with the bear or a bear was harmed in the incident, please report to the USFS Ranger and California Department of Fish and Wildlife.

to the dog to stop its barking. That person turned on a headlamp, looked up and saw the bear on other side of picnic table, about 15 feet away!



The bear turned its head and upper body away towards the creek when it saw the headlamp directed at it.

11. How did the bear react to you?

~~The bear walked away from our campground~~

I said, "Oh, shut there's a bear!" and turned away to grab my dog and to run away.

12. What did you do then?

~~Wakened up and with my head lamp saw the bear as the stopped walking.~~

13. How did the bear react to your response?

I think the bear ~~seen~~ went towards the creek, but I didn't see it go.

14. How close did you come to the bear (how many feet)?

About 15-20 feet away

15. Was human food present?

- a. Food not in bear resistant container
- b. Food in bear resistant container
- c. Food odor only
- d. Food hung in tree
- e. No food present
- f. Unknown

Cooler was on picnic table along with a few food items. Most food was in bear locker.

16. Did the bear eat any human food?

- a. No
- b. Yes (what?) _____
- c. Unknown

17. Did the bear damage property?

- a. No
- b. Yes (list property and estimate costs) _____

18. Details of bear-human interaction (optional):

We grabbed our dog and quickly headed over to the hosts to report the bear. The host drove to our campsite in their golf cart but didn't see the bear there. The bear did not seem aggressive towards us or the dog. It was probably just looking for food or was curious. It was quiet and big!



BEAR ENCOUNTER FORM

Bear Management Monitoring

Crystal Basin Recreation Area



Use a separate form for each individual incident. For example, if the same bear enters two campsites while people are present, a person from each campsite should report the specifics of their encounter. Give completed forms to campground hosts. If your recreation site has no host, forms should be placed in the appropriate receptacle at the site or dropped off at the Crystal Basin Information Station on Ice House Road between Ice House Reservoir and Union Valley Reservoir. Forms also can be dropped off at the Pacific Ranger Station at 7887 Highway 50, Pollock Pines, CA 95726.

1. Person(s) involved:

Name: Just Johansen

Address: P.O. Box 314

City: Hot Holt State: CA

Zip code: 95234 Phone: 209.465.9277

Country: USA

2. Describe yourself:

- a. Visitor ✓
- b. Camp host
- c. USFS employee
- d. Contractor
- e. Other _____

3. Visitor activity:

- a. Camping – developed campground ✓
- b. Camping – undeveloped campsite/wilderness
- c. Day use area
- d. Hiking on maintained trail
- e. Other _____

4. Group size: 1

(number of people who encountered the bear)

5. Time of encounter: Month: 06 Day: 03 Year: 16 Time: 2130 am/pm (pm)

For office use only:

Report collected by: _____ (USFS/camp host)

Date: _____

6. Location of encounter:

- a. Airport Flat campground
- b. Angel Creek day use area
- c. Azalea Cove campground
- d. Big Silver group campground
- e. Camino Cove campground
- f. Fashoda campground
- g. Gerle Creek campground complex
- h. Ice House campground/
boat launch/day use area
- i. Jones Fork campground
- j. Junction Reservoir boat launch
- k. Lone Rock campground
- l. Loon Lake campground/boat ramp
- m. Loon Lake chalet
- n. Northshore campground
- o. Northshore RV campground
- p. Pleasant campground
- q. Red Fir group campground
- r. Strawberry Point campground
- s. Sunset campground/boat launch
- t. Union Valley bike trail
- u. Wench Creek campground
- v. Wench Creek group campground
- w. West Point campground/boat launch
- x. Wolf Creek campground
- y. Wolf Creek group campground
- z. Yellowjacket campground/boat launch
- Other _____

7. Number and description of bears (how many, what color, size, adult or cub, sex?):

One dark brown, very large, adult, unknown sex, Bear

8. Did the bear(s) harm anyone?

a. No b. Yes* (describe) _____

9. What were you doing before you saw the bear?

Sleeping

10. What was the bear doing when you first saw it?

Opening an ice chest

* If there was a physical encounter with the bear or a bear was harmed in the incident, please report to the USFS Ranger and California Department of Fish and Wildlife.

11. How did the bear react to you?

No reaction

12. What did you do then?

I told him/her to leave

13. How did the bear react to your response?

No reaction

14. How close did you come to the bear (how many feet)?

10 feet

15. Was human food present?

- a. Food not in bear resistant container
- b. Food in bear resistant container
- c. Food odor only
- d. Food hung in tree
- e. No food present
- f. Unknown

16. Did the bear eat any human food?

- a. No
- b. Yes (what?) Small assortment of fruit
- c. Unknown

17. Did the bear damage property?

- a. No
- b. Yes (list property and estimate costs) Teeth punctured in ice chest.

18. Details of bear-human interaction (optional):

We played a couple hands of gin rummy and shared a beer. Bear seemed to have no fear of humans.





BEAR ENCOUNTER FORM

Bear Management Monitoring Crystal Basin Recreation Area



Use a separate form for each individual incident. For example, if the same bear enters two campsites while people are present, a person from each campsite should report the specifics of their encounter. Give completed forms to campground hosts. If your recreation site has no host, forms should be placed in the appropriate receptacle at the site or dropped off at the Crystal Basin Information Station on Ice House Road between Ice House Reservoir and Union Valley Reservoir. Forms also can be dropped off at the Pacific Ranger Station at 7887 Highway 50, Pollock Pines, CA 95726.

For office use only:

Report collected by: C. Camp (USFS/camp host)

Date: 6-4-16

1. Person(s) involved:

Name: Robert Smith

Address: 7038 El Nido Ct.

City: Elk Grove State: Ca

Zip code: 95624 Phone: 916 685 3442

Country: U.S.A.

2. Describe yourself:

- a. Visitor
- b. Camp host
- c. USFS employee
- d. Contractor
- e. Other _____

3. Visitor activity:

- a. Camping – developed campground
- b. Camping – undeveloped campsite/wilderness
- c. Day use area
- d. Hiking on maintained trail
- e. Other PUSHING WEST WILDERNESS PATROL

4. Group size: 2

(number of people who encountered the bear)

5. Time of encounter: Month: 6 Day: 3 Year: 16 Time: 10:30 am/pm

6. Location of encounter:

- a. Airport Flat campground
- b. Angel Creek day use area
- c. Azalea Cove campground
- d. Big Silver group campground
- e. Camino Cove campground
- f. Fashoda campground
- g. Gerle Creek campground complex
- h. Ice House campground/
boat launch/day use area
- i. Jones Fork campground
- j. Junction Reservoir boat launch
- k. Lone Rock campground
- l. Loon Lake campground/boat ramp
- m. Loon Lake chalet
- n. Northshore campground
- o. Northshore RV campground
- p. Pleasant campground
- q. Red Fir group campground
- r. Strawberry Point campground
- s. Sunset campground/boat launch
- t. Union Valley bike trail
- u. Wench Creek campground
- v. Wench Creek group campground
- w. West Point campground/boat launch
- x. Wolf Creek campground
- y. Wolf Creek group campground
- z. Yellowjacket campground/boat launch
- Other _____

7. Number and description of bears (how many, what color, size, adult or cub, sex?):

1 DARK BEAR, 4 TO 5 HUNDRED POUNDS

8. Did the bear(s) harm anyone?

a. No b. Yes* (describe) NO

9. What were you doing before you saw the bear?

TRAVELING NIGHTLY PATROL (ROUND) IN GOLF CART

10. What was the bear doing when you first saw it?

LOOKING AT US

* If there was a physical encounter with the bear or a bear was harmed in the incident, please report to the USFS Ranger and California Department of Fish and Wildlife.

11. How did the bear react to you?

STOOD STILL

12. What did you do then?

I YELLED AND MOVED THE LIGHT BACK AND FORTH

13. How did the bear react to your response?

RAN IN AN EASTERLY DIRECTION TOWARD WAY OUT

14. How close did you come to the bear (how many feet)?

10 TO 12 FEET

15. Was human food present?

- a. Food not in bear resistant container
- b. Food in bear resistant container
- c. Food odor only
- d. Food hung in tree
- e. No food present
- f. Unknown

16. Did the bear eat any human food?

- a. No
- b. Yes (what?) _____
- c. Unknown

17. Did the bear damage property?

- a. No
- b. Yes (list property and estimate costs) _____

18. Details of bear-human interaction (optional):

AS WE WERE FINISHING OUR LAST PATROL RUN OUR LIGHT PICKED UP EYES IN OUR CAMP SITE. WE TURNED INTO OUR DRUGS CART AND THE BEAR WAS STANDING RIGHT IN FRONT OF US. IT JUST STOOD STILL UNTIL I YELLED AND "WIGGLED" THE LIGHT AT IT. IT STARTED RUNNING TOWARD AIRPORT PLAT AND WAS NOT SEEN AGAIN. THERE HAS BEEN A REPORT OF "NOISES" IN SITE 37 EARLIER BUT NO EVIDENCE OF THE BEAR





BEAR ENCOUNTER FORM

Bear Management Monitoring

Crystal Basin Recreation Area



Use a separate form for each individual incident. For example, if the same bear enters two campsites while people are present, a person from each campsite should report the specifics of their encounter. Give completed forms to campground hosts. If your recreation site has no host, forms should be placed in the appropriate receptacle at the site or dropped off at the Crystal Basin Information Station on Ice House Road between Ice House Reservoir and Union Valley Reservoir. Forms also can be dropped off at the Pacific Ranger Station at 7887 Highway 50, Pollock Pines, CA 95726.

1. Person(s) involved:

Name: Melissa Green
Address: 105 Eveland Court
City: Folsom State: CA
Zip code: 95630 Phone: 916 806 1951
Country: USA

2. Describe yourself:

- a. Visitor
- b. Camp host
- c. USFS employee
- d. Contractor
- e. Other _____

3. Visitor activity:

- a. Camping – developed campground
- b. Camping – undeveloped campsite/wilderness
- c. Day use area
- d. Hiking on maintained trail
- e. Other _____

4. Group size: 1
(number of people who encountered the bear)

5. Time of encounter: Month: 5 Day: 30 Year: 2016 Time: 9:15 am/pm

For office use only:

Report collected by: Spindler (USFS/camp host)

Date: 6-1-16

6. Location of encounter:

- a. Airport Flat campground
- b. Angel Creek day use area
- c. Azalea Cove campground
- d. Big Silver group campground
- e. Camino Cove campground
- f. Fashoda campground
- g. Gerle Creek campground complex
- h. Ice House campground/
boat launch/day use area
- i. Jones Fork campground
- j. Junction Reservoir boat launch
- k. Lone Rock campground
- l. Loon Lake campground/boat ramp
- m. Loon Lake chalet
- n. Northshore campground
- o. Northshore RV campground
- p. Pleasant campground
- q. Red Fir group campground
- r. Strawberry Point campground
- s. Sunset campground/boat launch
- t. Union Valley bike trail
- u. Wench Creek campground
- v. Wench Creek group campground
- w. West Point campground/boat launch
- x. Wolf Creek campground
- y. Wolf Creek group campground
- z. Yellowjacket campground/boat launch
- * Other outside official camp site

7. Number and description of bears (how many, what color, size, adult or cub, sex?):

1, brown, teenager (seemed to be alone)

8. Did the bear(s) harm anyone?

a. No b. Yes* (describe) No!

9. What were you doing before you saw the bear? Preparing for night photography a 50 yards from nearest site

10. What was the bear doing when you first saw it? setting camera, heard noise, used flashlight to ID source

* If there was a physical encounter with the bear or a bear was harmed in the incident, please report to the USFS Ranger and California Department of Fish and Wildlife.

11. How did the bear react to you?

Ran away, I could ^{see} ~~see~~ its butt

12. What did you do then?

Packed up camera & tripod, used flashlight to look again - bear was looking at light

13. How did the bear react to your response?

Stayed put & did not follow me

14. How close did you come to the bear (how many feet)?

75 to 100 feet

15. Was human food present?

- a. Food not in bear resistant container
- b. Food in bear resistant container
- c. Food odor only
- d. Food hung in tree
- e. No food present
- f. Unknown

16. Did the bear eat any human food?

- a. No
- b. Yes (what?)
- c. Unknown

17. Did the bear damage property?

- a. No
- b. Yes (list property and estimate costs) No!

18. Details of bear-human interaction (optional):

Bear was walking up small seasonal stream behind campsites. It was very surprised to be discovered. No growling noises. It just walked on a stick & it broke - the noise I heard. Bear did not come through campground.





BEAR ENCOUNTER FORM

Bear Management Monitoring

Crystal Basin Recreation Area



Use a separate form for each individual incident. For example, if the same bear enters two campsites while people are present, a person from each campsite should report the specifics of their encounter. Give completed forms to campground hosts. If your recreation site has no host, forms should be placed in the appropriate receptacle at the site or dropped off at the Crystal Basin Information Station on Ice House Road between Ice House Reservoir and Union Valley Reservoir. Forms also can be dropped off at the Pacific Ranger Station at 7887 Highway 50, Pollock Pines, CA 95726.

1. Person(s) involved:

Name: Matthew Crosley
Address: 1413 alpine Dr
City: Pittsburg State: CA
Zip code: 94565 Phone: 925-864-2200
Country: _____

2. Describe yourself:

- a. Visitor
- b. Camp host
- c. USFS employee
- d. Contractor
- e. Other _____

3. Visitor activity:

- a. Camping - developed campground
- b. Camping - undeveloped campsite/wilderness
- c. Day use area
- d. Hiking on maintained trail
- e. Other _____

4. Group size: 4
(number of people who encountered the bear)

5. Time of encounter: Month: 5 Day: 29 Year: 2016 Time: 4:00 (am/pm)

For office use only:

Report collected by: _____ (USFS/camp host)

Date: _____

6. Location of encounter:

- a. Airport Flat campground
- b. Angel Creek day use area
- c. Azalea Cove campground
- d. Big Silver group campground
- e. Camino Cove campground
- f. Fashoda campground
- g. Gerle Creek campground complex
- h. Ice House campground/
boat launch/day use area
- i. Jones Fork campground
- j. Junction Reservoir boat launch
- k. Lone Rock campground
- l. Loon Lake campground/boat ramp
- m. Loon Lake chalet
- n. Northshore campground
- o. Northshore RV campground
- p. Pleasant campground
- q. Red Fir group campground
- r. Strawberry Point campground
- s. Sunset campground/boat launch
- t. Union Valley bike trail
- u. Wench Creek campground
- v. Wench Creek group campground
- w. West Point campground/boat launch
- x. Wolf Creek campground
- y. Wolf Creek group campground
- z. Yellowjacket campground/boat launch
- Other _____

7. Number and description of bears (how many, what color, size, adult or cub, sex?):

1 Brown medium size adult

8. Did the bear(s) harm anyone?

a. No b. Yes* (describe) _____

9. What were you doing before you saw the bear?

Bathroom Break

10. What was the bear doing when you first saw it?

eating

* If there was a physical encounter with the bear or a bear was harmed in the incident, please report to the USFS Ranger and California Department of Fish and Wildlife.

11. How did the bear react to you?

it ran

12. What did you do then?

Kept light on him until he was out of the site

13. How did the bear react to your response?

kept running

14. How close did you come to the bear (how many feet)?

50ft

15. Was human food present?

- a. Food not in bear resistant container
- b. Food in bear resistant container
- c. Food odor only
- d. Food hung in tree
- e. No food present
- f. Unknown

16. Did the bear eat any human food?

- a. No
- b. Yes (what?) chips water melon
- c. Unknown

17. Did the bear damage property?

- a. No
- b. Yes (list property and estimate costs) _____

18. Details of bear-human interaction (optional):

noticed the bear it ran off





Attachment 4

Management Monitoring, Crystal Basin Recreation Area , Eldorado National Forest

2016 Results Summary - Compiled by Ethan Koenigs, SMUD

1. Name	2. Description	3. Visitor Activity	4. Group Size	5. Date/Time of Encounter	6. Location	7. Number / description of bear(s)	8-14 - Description of interaction w/ bear	15. Food Present	16. Consumption by Bear	17. Property Damage	Comments
	Visitor	Camping - Developed	28	8/14/2016	Big Silver Group	1	Bear in camp - ran off	Yes - no container	Yes	No	Bear ate cheese, hot dogs, pancakes, Salad, mustard, mayo, lunch meat and bell peppers
	Camp Host	Camping	4	6/11/2016	Capps Crossing	1	Bear rummaging through trash	Yes - in resistant container	?	No	
	Visitor	Camping - Developed	1	5/30/2016	Gerle Creek	1	Visitor Night Photography near CG/ Visitor went back to camp	No	No	No	
	Camp Host	Patrol	2	6/3/2016	Gerle Creek	1	Bear walking through Camp/ ran off	No	No	No	
	Visitor	Camping - Developed	1	6/3/2016	Gerle Creek	1	Bear In camp/ bear stayed put	Yes -no container	Yes	Yes	punctures in ice chest
	Visitor	Camping - Developed	2	6/3/2016	Gerle Creek	1	Bear in Camp/ bear walked away	Yes -no container	No	No	
	Visitor	Camping - Developed	2	7/17/2016	Gerle Creek	1	Bear in camp/ ravaged camp/ walked away	Yes - in resistant container	Yes*	Yes	* Bear ate soap/ sniffed tent/ Bear damaged solar shower, water jug, chair, tent
	Visitor	Camping - Developed	4	7/19/2016	Gerle Creek	?	Bear in camp/ investigating camp trailer	Yes - in resistant container	No	Yes	Damage to spare tire cover and gas stove
	Visitor	Camping - Developed	2	7/19/2016	Gerle Creek	1	bear in camp/ ran away	Yes - in resistant container	No	No	
	Visitor	Camping - Developed	4	7/19/2016	Gerle Creek	1	bear in camp/ ran away	Yes - no container	Yes	Yes	Bear damaged cooler - ate plums, chicken , cheese, grapes- 2 encounters in 2 nights
	Visitor	Camping - Developed	3	7/20/2016	Gerle Creek	1	Bear disturbing camp kitchen/ ran off	Yes - in resistant container	No	No	
	Visitor	Camping - Developed	2	7/20/2016	Gerle Creek	1	Bear in camp - moved on	Yes - in resistant container	No	No	Bear destroyed cooler at neighboring camp
	Visitor	Camping - Developed	2	7/21/2016	Gerle Creek	?	bear in camp/ ran away	Yes - in resistant container	No	No	
	Visitor	Camping - Developed	3	7/21/2016	Gerle Creek	1	Bear investigeting/ climbing on vehicle/ ran off	Yes - no container	Yes	No	two encounters over 2 nights 7/21-7/22 - Bear ate apple left in trailer
	Visitor	Camping - Developed	2	7/24/2016	Gerle Creek	1	Bear in camp/ walked away	?	No	Yes	Bear did not respond to initial attempts to scare away; bear damaged vehicle window, door and mirror
	Visitor	Camping - Developed	1	7/25/2016	Gerle Creek	1	Bear in camp/ disturbing camp gear/vehicle/ walked away	?	?	Yes	Dented pick-up cab/ multiple encounters over several nights
	Visitor	Camping - Developed	4	8/2/2016	Gerle Creek	1	Bear in camp	Yes - no container	Yes	No	
	Visitor	Camping - Developed	4	8/3/2016	Gerle Creek	1	Bear in camp / ran away	Yes - Hung in tree	No	No	Bear attracted to hornet trap
	Visitor	Camping - undeveloped	?	8/13/2016	Millionaire Camp	1	Bear in camp - investigating camp items/ walked away	Yes*	Yes*	Yes	*Bear reportedly ate mac n cheese from neighbor's camp which was in a cooler - damage cooler
	Visitor	Camping - Developed	4	5/29/2016	Wolf Creek	1	Bear in camp / ran away	Yes - no container	Yes	No	